

BRITISH ENTOMOLOGY;
BEING
ILLUSTRATIONS AND DESCRIPTIONS
OF
THE GENERA OF INSECTS

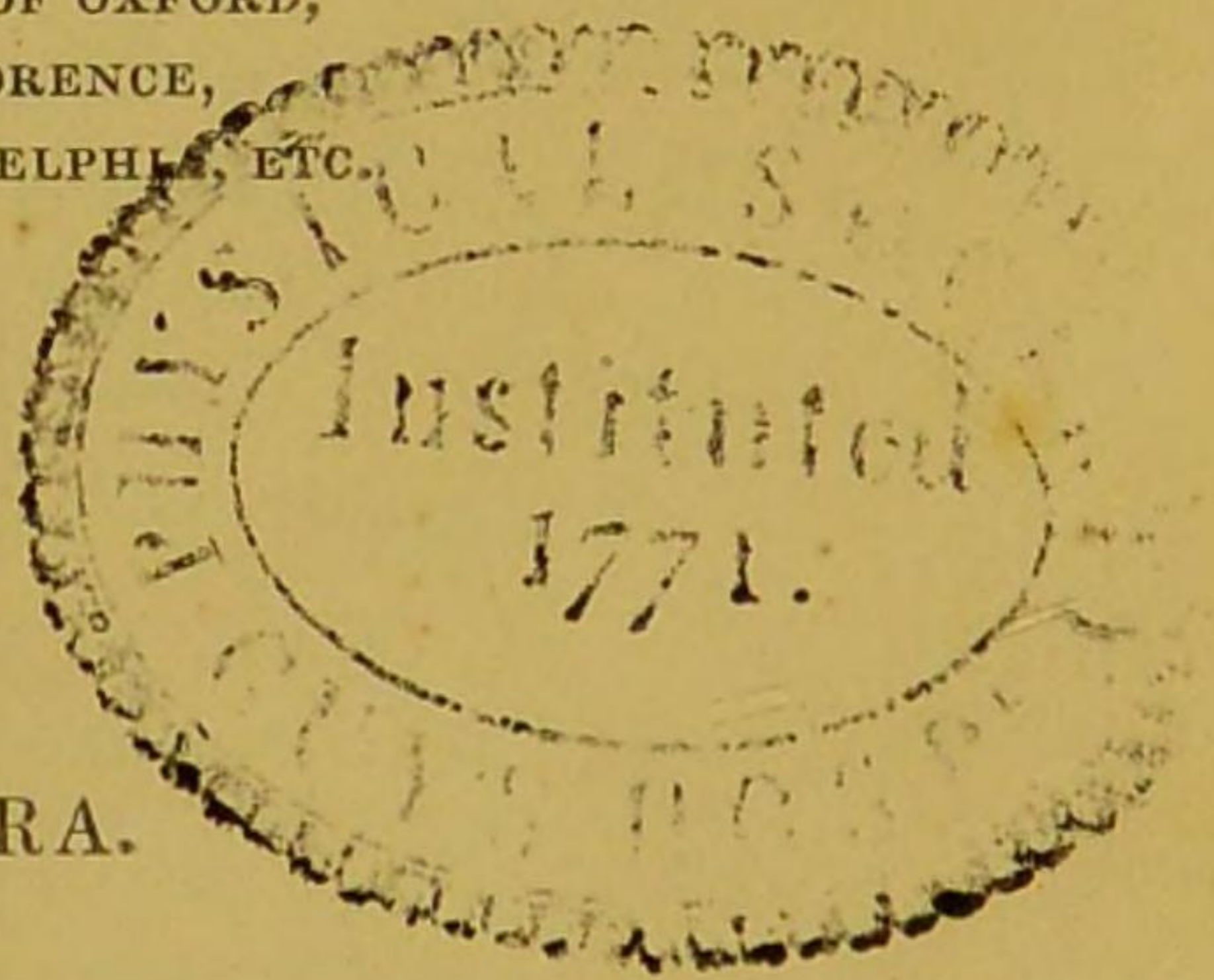
FOUND IN
GREAT BRITAIN AND IRELAND:
CONTAINING
COLOURED FIGURES FROM NATURE
OF THE MOST RARE AND BEAUTIFUL SPECIES,
AND IN MANY INSTANCES
OF THE PLANTS UPON WHICH THEY ARE FOUND.

BY JOHN CURTIS, F.L.S.

HONORARY MEMBER OF THE ASHMOLEAN SOCIETY OF OXFORD,
OF THE IMPERIAL AND ROYAL ACADEMY OF FLORENCE,
OF THE ACADEMY OF NATURAL SCIENCES OF PHILADELPHIA, ETC.

VOL IV.

HYMENOPTERA, PART II.
NEUROPTERA. TRICHOPTERA.



LONDON:

PRINTED FOR THE AUTHOR,

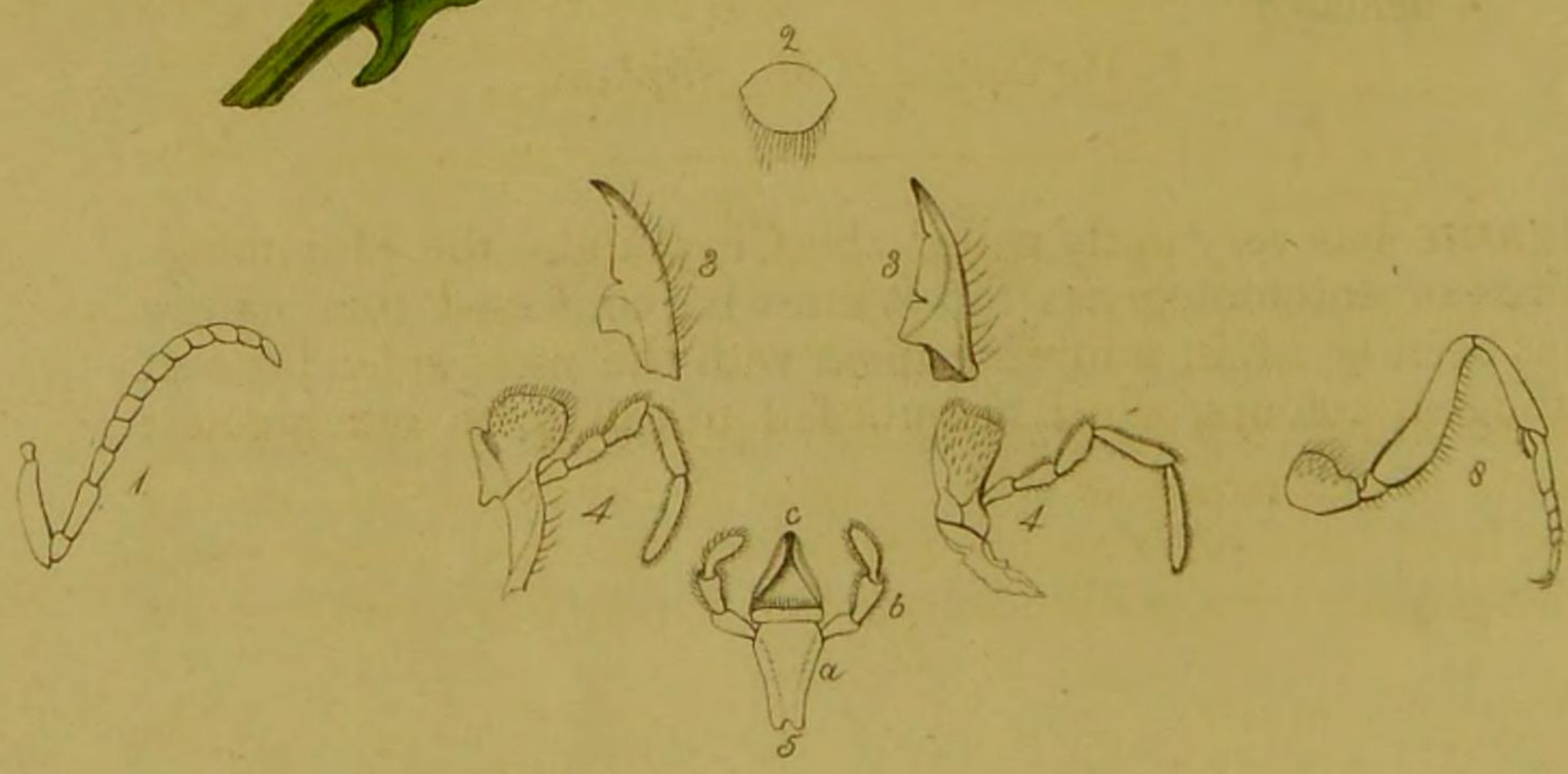
AND SOLD BY

E. ELLIS AND CO., 92 GREAT RUSSELL STREET, BLOOMSBURY;

SIMPKIN AND MARSHALL, STATIONERS' COURT; AND

J. B. BAILLIERE, 219 REGENT STREET.

1823—1840.



Publ. by J. Curtis London Feb. 1. 1824

CHRYSIS FULGIDA.

ORDER Hymenoptera. FAM. Chrysididæ *Lat.*

Type of the Genus Chrysis ignita L.

CHRYSIS. *Antennæ* inserted close to the margin of the clypeus, geniculated, fusiform, with 13 joints. (1.)

Labrum somewhat oval, entire, ciliated. (2.)

Mandibles arcuated, acute, crenated on the inner, hairy on the outer edge. (3. 3.)

Maxillæ somewhat square, the apex rounded at the internal angle and more acute externally, the interior margin dilated abruptly; membranaceous and hairy above, nearly coriaceous below the centre: *Palpi* 5-jointed, much longer than the maxillæ, third joint the thickest, fourth and fifth joints slender and twice the length of the former. (4. 4.)

Mentum triangular-oblong, (5. a.). *Palpi* short, 3-jointed, (5. b.)

Lip with the edges conniving externally. (5. c.)

Clypeus with a deep impression between the eyes. *Thorax* semicylindric, angular, divided by 3 transverse sutures: metathorax not elongated into a scutellum: *Body* contractile into a ball. *Abdomen* attached by a portion only of its transverse diameter, convex above, concave beneath, semicylindric, elongate, composed of 3 joints, the second being the largest, the last segment abruptly divided by a transverse impression with a row of impressed dots in the same direction. *Tarsi* with 5 joints (8. a fore leg). *Oviduct* long, soft and membranaceous, composed of several sheaths, in which is concealed a sting. *Superior wings* with the marginal cell shut up, submarginal and inferior discoidal cells with only a short nerve to divide them: *inferior wings* without distinct nervures.

C. FULGIDA *Linn. Syst. Nat.* 2. 948. 7. *Fab. Ent. Syst. t. 2. p.* 240. n. 8.

Shining: deeply punctured and pubescent: head, thorax, first segment of abdomen and legs bright blue variegated with green and purple, second and third segments of abdomen bright crimson reflecting gold and green: beneath green: tarsi and antennæ (except the first 3 joints) black. Wings fuscous. Anus 4-dentated.

In the Cabinet of Mr. Stephens.

JURINE has very aptly called the Chrysididæ the Humming-birds of entomologists; for it must be confessed that nature has been lavish in adorning them with the most splendid and effulgent colours, which cannot fail to call forth our greatest

wonder and admiration. Every one who has taken delight in observing the works of Nature must have noticed the resplendent hues of the common *C. ignita*, which is seen in the heat of the day running up and down the southern sides of walls, and about paling and posts in gardens where other species may also be found. About 16 species have been taken in this island; some of them however are so closely allied, that on further investigation they may prove to be only varieties.

The beautiful species represented is a female (the natural size of which is denoted by crossed lines): it was taken with other specimens in June at Birch-wood or Bexley in Kent, by a collector* who has for many years enriched the first cabinets in the country by his labours; and as I well recollect the advantage and delight with which I used to visit this respectable man upon my earliest acquaintance with London, I have pleasure in making mention of him here.

Latreille has very judiciously divided the Chrysididæ into seven Genera, five of which are British: Jurine, having founded his Characters upon the forms of the cells of the wings, has not adopted them.

The Genus *Chrysis* may be divided into the species with the anal joint dentated, and those with an entire margin, as in *C. rufa* Pz.

The plant represented is *Thlaspi Bursa-pastoris* (Shepherd's Purse).

* Mr. Standish, 10 Prior Place, East Lane, Walworth; who has always Insects of his own collecting for sale.