

NEW SPECIES OF *PORTANUS*  
(HOMOPTERA: CICADELLIDAE) FROM BOLIVIA

by Dwight M DeLong

Department of Entomology, The Ohio State University

Key Word Index: *Portanus* (Homoptera: Cicadellidae). Bolivia. Taxonomy.

ABSTRACT

Three new species of *Portanus*, *P. acerus*, *P. chelatus*, and *P. quadrinus* all from Bolivia are described.

The genus *Portanus* was described by Ball (1832). Linnavuori reviewed the genus and added six new species (1959). Kramer published a synopsis of the genus and added 6 new species (1964). The genus now comprises 19 species and three more new species are added at this time. All type specimens are in the DeLong Collection. Several species which are brown in color are very similar in appearance but differ genitalicly. These differences can be observed by comparing the illustrations used in this manuscript with those of Kramer (1964) referred to above.

*Portanus quadrinus* n.sp.  
(Figs. 1-4)

Length of male 4.5 mm, female unknown. Crown bluntly pointed, a little wider between eyes at base than median length. Color, crown brown with two round darker brown spots between anterior margins of eyes. Pronotum dark brown with numerous white spots. Forewings brown, veins brown with many white spots.

Male genitalia with plates long and rounded at apex. Style divided on apical fourth, with the two portions pincer-like, one portion shorter and broader than the other. Aedeagus with two pairs of processes curving laterally and basally at apex; two arise from dorsocaudal margin and a second pair arise on lateral margin of apical portion of shaft and are longer than caudal pair. Pygofer with a conspicuous spine arising on apical margin where it is heavily sclerotized and extending cephalad along pygofer about one-third distance from base.

Holotype male Bolivia: San Esteban, 49 km N. Sta. Cruz, XII-7-59. El. 341.37 m. R. Cummings coll.

The aedeagal process of *quadrinus* is not similar to any other described species.

*Portanus acerus* n.sp.  
(Figs. 5–6)

Length of male 5 mm, female 5.2 mm. Crown bluntly pointed, a little wider between eyes at base than median length. Color, face pale yellow including margin of crown. Crown pale brown with two darker brown spots between eyes near base. Pronotum dark brown with pale brown punctate spots. Scutellum yellow with a spot at center, apical and basal angles dark brown. Forewings dark brown subhyaline, veins of clavus alternately white.

Male genitalia with plates long and pointed. Style chelate apically, with one "claw" bearing a tooth on inner margin at about its middle. Aedeagus terminating in a pair of long processes extending caudally, broad at base, tapering to slender apices. An erect process arises at end of shaft between the bases of these processes. Pygofer broadly rounded apically bearing a short spine on dorsocaudal margin which extends inwardly.

Holotype male Bolivia: San Esteban, 49 km N. Sta. Cruz. X–2–59. El. 341.37 m. R. Cummings coll.

*P. acerus* resembles most closely *P. longicornis* Osborn but has longer processes on aedeagus and an additional process at terminus of shaft. The style is different and the pygofer does not bear a complex spine as *longicornis*.

*Portanus chelatus* n.sp.  
(Figs. 7–9)

Length of male 5.2 mm, female unknown. Crown bluntly angularly rounded. Color, face, crown and pronotum yellowish mottled with dark brown. Scutellum yellow with dark brown basal angles. Forewings pale brown subhyaline, veins mostly brown with white spots.

Male genitalia with plates long and pointed. Style chelate at apex with one portion of "claw" bearing a thumb-like process on inner margin at base. Aedeagus with shaft expanded apically forming a triangular process which is pointed at apex, extending dorsally and cephalad; shaft proper pointed at apex, dorsocephalad portion slender, rounded at apex. Pygofer bearing a long spine which arises at base caudally, extending dorsally along caudal margin of pygofer and exceeding pygofer well in length.

Holotype male Bolivia: San Esteban, 49 km N. Sta. Cruz. X–26–59. El. 341.37 m. R. Cummings coll.

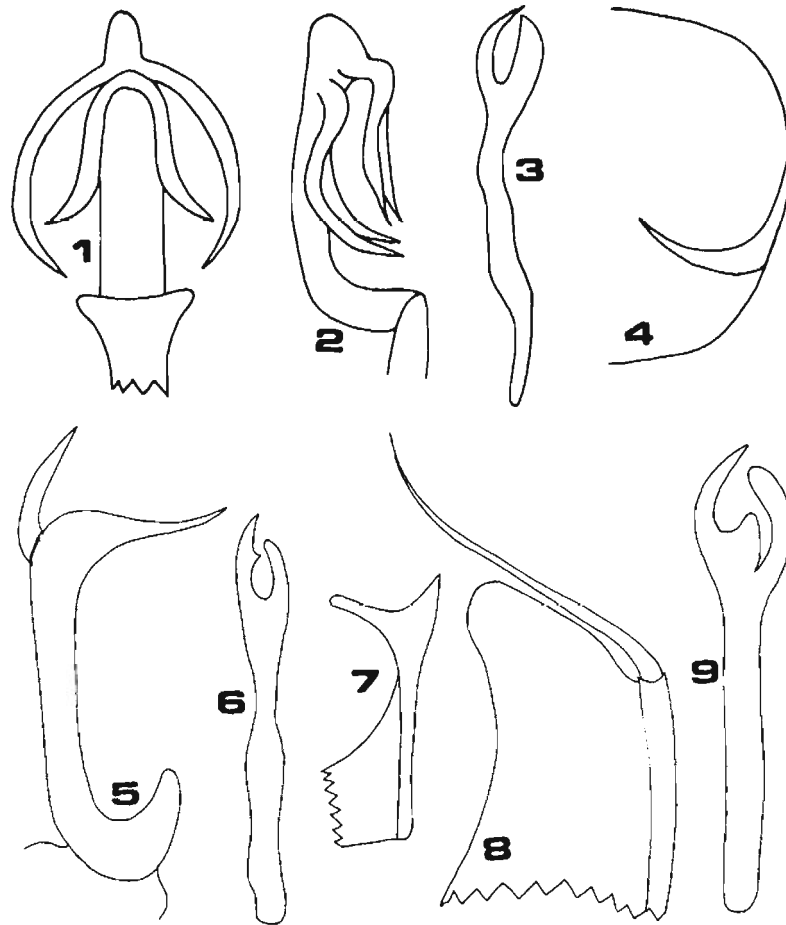
*P. chelatus* is closely related to *P. major* Linnavuori but the aedeagus and style are each different and the apical spine on pygofer extends well beyond the apex of pygofer.

### Resumen

Se describen tres nuevas especies de homópteros cicadélidos: *Portanus acerus*, *P. chelatus* y *P. quadrinus* todas procedentes de Bolivia.

### Literature Cited

- Ball, E. D. 1932. New genera and species of leafhoppers related to *Scaphoideus*. Washington Acad. Sci. 22:9–19.
- Kramer, J. P. 1964. A key for *Portanus* with new records and descriptions of new species (Homoptera:Cicadellidae:Xestocephalinae). Entomol. Soc. Wash. 66:5–11.
- Linnavuori, R. 1959. Revision of Neotropical Deltocephalinae and some related subfamilies (Homoptera). Ann. Zool. Soc. "Vanamo" 20(1):1–370.



Figures 1–4 *Portanus quadrinus* n.sp. 1) aedeagus (apical portion) caudally, 2) aedeagus laterally, 3) style ventrally, 4) pygofer (apical portion) laterally.

Figures 5–6 *P. acerus* n.sp. 5) aedeagus laterally, 6) style ventrally.

Figures 7–9 *P. chelatus* n.sp. 7) aedeagus laterally, 8) pygofer laterally, 9) style ventrally.