

A NEW GENUS *DUMORPHA*
AND NEW SPECIES OF GYPONINAE
(HOMOPTERA: CICADELLIDAE)¹

DWIGHT M. DELONG AND PAUL H. FREYTAG

The Ohio State University, Columbus, Ohio;
The University of Kentucky, Lexington, Kentucky, respectively

ABSTRACT

A new genus *Dumorpha* with the type-species *D. dedeca* n. sp. from Venezuela are described.

In 1972 we published a key to the genera of the World Gyponinae. A new genus *Dumorpha* not included in the key and the type-species *D. dedeca* n. sp. are described in the following pages. In appearance *Dumorpha* resembles *Gypona*, but it bears aedeagal parameres. Although it has a crown with a thin margin, it probably is related to *Ponana* and *Polana*.

Genus *Dumorpha* DeLong & Freytag, new genus

Crown broadly rounded, two-thirds as long at middle as basal width between eyes, striae transverse; anterior margin thin, foliaceous. Ocelli large, closer to anterior than posterior margin and closer to proximal eye than to median line. Forewings with normal venation. Aedeagus with paired parameres.

Type-species: *Dumorpha dedeca* n. sp.

In form and general appearance *Dumorpha* resembles *Gypona*, but aedeagal parameres are not known to occur in any described species of *Gypona*. Also the striae are transverse as in *Ponana* and *Polana*, but *Dumorpha* has a definite thin margin not found in these 2 genera.

Dumorpha dedeca DeLong & Freytag, n. sp.
(Fig. 1-5)

Length: male 7.5 mm, female 8.5 mm. Crown broadly rounded, two-thirds as long at middle as basal width between eyes with margin thin and foliaceous. Postclypeus depressed beneath anterior margin of crown. Ocelli nearer anterior than posterior margin of crown and nearer eyes than median line.

Color: Crown yellow with a small black spot just in front of each ocellus and a small black spot behind each ocellus near basal margin of crown. Pronotum yellow with numerous brown punctate spots on median and posterior portions. Scutellum yellow with a small brown spot in each basal angle. Forewings yellow with 3 pairs of small brown spots along commissure, (median pair a little larger) a brown spot at each end of discal cell, several spots along costa, and small flecks of brown throughout.

¹This work was sponsored by The Ohio State University Development Fund. Accepted for publication.

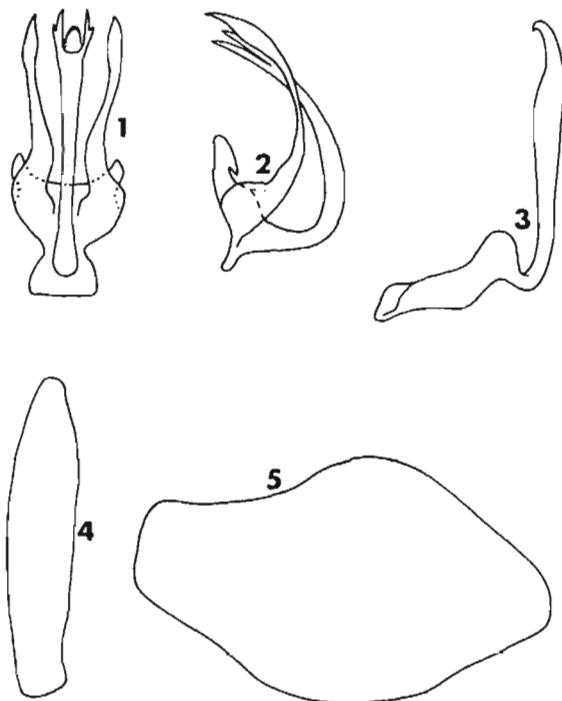


Fig. 1-5. *Dumorpha dedeca* n. sp. 1) aedeagus, ventrally, 2) aedeagus, laterally, 3) style, laterally, 4) plate, ventrally, 5) pygofer, laterally.

Male genitalia: Plates 4 times as long as median width, apex narrow, rounded. Style with blade slender, broadened on dorsal margin at two-thirds its length, than narrowed, curved dorsally, with a rounded apex bearing a tooth on basal margin. Aedeagus with shaft thin, curved dorsally, with a blunt median apex, with lateral portions extending beyond median portion bifurcate and pointed at apices; parameres arising from base extending to apex of shaft, broadened subapically, with apices narrowed, pointed.

Female genitalia: Seventh sternum with lateral angles rounded to a truncate posterior margin which is then slightly, roundedly notched at middle.

Holotype male: Caracas, Venezuela, VIII-IX-1949, A. Mirsa. Allotype female: Same data as holotype. Paratypes: 3 males, same as holotype; 2 females, El Valle, D. F., Venezuela, G. Vivas-Berthier; 1 female, Pernambuco, Bonita Prov., Brazil, 2-I-1883; 1 female, same except 8-VII-1880. Holotype, allotype and paratypes in U.S.N.M. Collection, and 1 male, 1 female paratype in the DeLong Collection.

LITERATURE CITED

- DELONG, D. M., AND P. H. FREYTAG. 1972. Key to the Gyponinae. A key to the known genera and descriptions of five new genera. *J. Kans. Ent. Soc.* 45:218-235.