

New Guinea v

A Fourth Instalment of the Ross Collection of Ants  
 from New Guinea. By HORACE DONISTHORPE, F.Z.S.,  
 F.R.E.S., etc.

Subfamily DORYLINÆ.

1948 G

Tribe ECITINI.

*Enictus similis*, sp. n.

♂.—Pale brownish yellow, thorax darker, shining.  
 Clothed with scattered, outstanding, yellow hairs.

*Head* slightly longer than broad, broadest slightly behind middle, sides gently rounded, posterior angles rounded, but fairly distinct, posterior border truncate; *mandibles* rather narrow, crossed when closed, slightly hooked at apex, masticatory border armed with a curved, sharply pointed apical tooth, with a short sharp tooth preceding it, and a small denticule at base; *clypeus* narrow, transverse, anterior border straight; *frontal carinæ* curved, surrounding the insertion of the antennæ and enclosing the antennal foveæ; *eyes* entirely wanting; *antennæ* 10-jointed, *scape* short, curved and narrow at base, only extending back a little beyond middle of head, *funiculus* with joints 2-7 transverse, last two joints lighter in colour, pubescent, last joint large, pointed, not quite as long as the three preceding it taken together. *Thorax* narrow, slightly constricted in middle; *pronotum* smooth and shining, anterior angles rounded, but distinct; *mesonotum* and *epinotum* rugosely punctured; *petiole* and *post-petiole* less rugosely punctured; *petiole* higher and longer than post-petiole, but of the same breadth, no teeth beneath petiole and post-petiole; *gaster* oval, smooth and shining. *Legs* fairly long; *femora* incrassate. *Long.* 2.5 mm.

Described from fourteen workers, Maffin Bay, Dutch New Guinea, August 8, 1944. E. S. Ross Coll.

Subfamily Ponerinæ.

Tribe Amblyoponini.

*Myopopone rossi* Donisthorpe, Ann. & Mag. Nat. Hist.  
 (s. 11), xiv. p. 297 (1947).

One worker, Maffin Bay, Dutch New Guinea, August 1944. E. S. Ross Coll.

Published September 1948.

## Tribe ECTATOMMINI.

*Rhytidoponera gagates* Donisthorpe, Trans. R. Ent. Soc. Lond. xci. pt. 2, pp. 51-64 (1941).

Twelve workers, Maffin Bay, Dutch New Guinea, June 22 and July, 1944. E. S. Ross Coll.

## Tribe PLATYTHYREINI.

*Platythyra melancholica* F. Smith, Journ. Proc. Linn. Soc. Zool. viii. p. 71 (1864).

Three workers, Maffin Bay, Dutch New Guinea, June 20 and August, 1944. E. S. Ross Coll.

## Tribe PONERINI.

✓✓ *Euponera* (*Mesoponera*) *viehmeyeri*, sp. n.

♀.—Black, funiculus, legs, apex of gaster and posterior border of segments yellowish red, scape brownish red.

*Head* longer than broad, broadest a little behind eyes, sides very slightly rounded, posterior angles rounded, posterior border slightly excised; very finely and closely punctured; *mandibles* long, narrow, crossed when closed, very finely microscopically punctured, somewhat shining, masticatory border armed with twelve teeth, the apical ones being the longest; *clypeus* narrow, transverse, anterior border rounded, slightly projecting in middle, sinuate at sides, strongly carinate in middle; *frontal carinæ* furnished with a lobe on each side in front, convergent, and then divergent behind; *frontal furrow* narrow, but distinct, reaching median ocellus; *eyes* small, situated in front of middle of sides of head, but some little distance from anterior border; *ocelli* small, indistinct; *antennæ* 12-jointed, *scape* long, extending beyond posterior border of head by about one-third of its length; *funiculus* increasing in breadth to apex, first joint shorter than second, last joint long and pointed, longer than the two preceding taken together. *Thorax* long, narrow, broadest behind humeral angles, slightly more finely punctured than head; *pronotum* convex, rounded at sides, with four punctures in a row on disc; *mesonotum* rather small, slightly convex, with sutures well marked; *epinotum* as long as pro- and mesonotum taken together, *dorsal surface* longer than declivity, raised in centre with sloping sides,

angle between it and declivity well marked, *declivity* flat, smooth and shining. *Scale* of *petiole* and *gaster* more finely punctured than thorax; *scale* high, rounded above, slightly convex anteriorly, flat posteriorly; *gaster* long oval, finely pubescent and clothed with scattered outstanding yellow bristles, strangulation between first and second segments not strong, those two segments being of about equal length. *Sting* strong. *Legs* long, the two posterior pairs of *tibiæ* armed with two *spurs*. *Long.* 8.5-9 mm.

Described from two workers, Maffin Bay, Dutch New Guinea, June 22 and August, 1944. E. S. Ross Coll.

*Type* in California Academy of Sciences, San Francisco.

This species comes nearest to *Euponera* (*Mesoponera*) *papuana* Viehmeyer, from which it differs in structure, puncturation, and being a little larger.

*Euponera* (*Trachymesopus*) *nixon*i Donisthorpe, Ann. & Mag. Nat. Hist. (s. 11), x. p. 441 (1943).

Sixteen workers, Maffin Bay, Dutch New Guinea, August 1944. E. S. Ross Coll.

*Myopias cribriceps* Emery, Term. Füzet, xxv. p. 156 (1901).

Three deâlated females, Maffin Bay, Dutch New Guinea, June 22, 1944. E. S. Ross Coll.

#### Tribe LEPTOGENYINI.

##### *Leptogenys* sp. ?

Three males, Maffin Bay, Dutch New Guinea, June 22 and July, 1924. E. S. Ross Coll.

*Leptogenys* (*Lobopelta*) *kitteli* Mayr, subsp. *purpurea* Emery, Ann. Mus. Stor. Nat. Genova, xxv. p. 433 (1887).

Twenty-one workers, Maffin Bay, Dutch New Guinea, June 20 and 27, 1944. E. S. Ross Coll.

#### Subfamily MYRMICINÆ.

#### Tribe SOLENOPSIDINI.

*Vollenhovia oblonga* F. Smith subsp. *pedestris* F. Smith, Journ. Proc. Linn. Soc. Lond. Zool. vi. p. 46 (1861).

Twelve workers, Maffin Bay, Dutch New Guinea, June 20, July and August 1, 1944. E. S. Ross Coll.

## Tribe PHEIDOLOGETINI.

✓✓ *Pheidologeton melanocephalus*, sp. n.

24.—Shining, head, thorax, petiole and post-petiole black, gaster dark brown, legs and antennæ yellowish red, clothed with longer and shorter, sparse, outstanding yellow hairs. In smaller 24 24 the body except head is chestnut brown.

*Head* longer than broad, broadest about half-way between eye and posterior angles, sides subparallel, posterior angles bluntly rounded, posterior border excised in middle. The frontal furrow extends from frontal area to posterior border of head, deeper behind, dividing posterior portion of head into two lobes. A number of transverse, not close, raised lines or rugæ are situated on posterior portion of head extending in a curve round the lobes. Similar longitudinal ones extend along the sides of the frontal carinæ and on the cheeks. A number of longer and smaller shallow punctures are scattered about the head, being closer and longer from the eye to the temples. The portions between the rugæ and punctures smooth and shining. Underside of head very sparsely punctate; a narrow longitudinal furrow extends along the gula to the foramen; *mandibles* large, massive, slightly and sparingly punctured on disc, a row of transverse furrows and larger punctures extend along the masticatory border, *masticatory* border blunt, unarmed, meeting when closed, *external border* rounded, angle between internal border and masticatory border well marked; *clypeus* narrow, transverse, anterior border excised in middle, convex on disc, extending between the frontal carinæ; *frontal area* triangular, sides well defined; *frontal furrow* starting in a somewhat deep depression, and continued as described above; *frontal carinæ* bluntly pointed, raised above the *antennal foveæ* which are round in front and fairly deep; *eyes* round, moderate, convex, situated before middle of sides of head; no trace of an *ocellus*; *antennæ* 11-jointed, short, *scape* only extending a little beyond posterior border of eye, first joint of *funiculus* longer than each of the joints to club, *club* consisting of two long joints, the apical one being longer than the one preceding it. *Thorax* somewhat short, but longer than

broad, broadest at humeral angles; *pronotum* convex, with finer transverse rugæ than on head; *mesonotum* with a few scattered punctures, otherwise smooth and shining; a very narrow transverse *præscutellum* is present; *scutellum* protuberant; *metanotum* small, broader than long, not as high as scutellum; *epinotum* armed with two stout, sharp spines, *dorsal surface* transversely striate, *declivity* longer than dorsal surface, slightly concave, smooth and shining; upper and posterior surface of *node* of *petiole* transversely striate, anterior surface long, smooth and shining; *post-petiole* transverse, broader than node of petiole, sides slightly produced, smooth and shining; *gaster* broad oval, longer than broad, sides evenly rounded, anterior border excised in middle, a few very small scattered punctures are present. *Legs* moderate; *femora* spindle-shaped; *claws* large. *Long.* 10–10.5 mm.

Described from two large soldiers, Maffin Bay, Dutch New Guinea. In rotting sago palm log, July 1944. E. S. Ross Coll.

There is a number of intermediate forms between the soldier and the worker minor, those measuring 4.5 mm. and 5.5 mm. and over are more like the soldier in colour and structure.

♂ Minor.—Pale yellow, shining; sparsely clothed with yellow outstanding hairs.

*Head* longer than broad, broadest just behind eyes, posterior angles bluntly rounded, posterior border straight, sides feebly rounded; *mandibles* rather long, narrow, *masticatory border* armed with four teeth; *clypeus* convex, anterior border rounded, posterior border inserted between the frontal carinæ; *frontal carinæ* short; *frontal area* indistinct; *eyes* very small, situated a little before middle of sides of head; *antennæ* 11-jointed, *scape* not reaching posterior border of head, first joint of *funiculus* longer and broader than each of the following seven joints; *club* consisting of two long joints, the apical one longer than the one preceding it. *Thorax* longer than broad, broadest at humeral angles; *promesonotum* convex, rounded; constriction between meso- and epinotum well marked; *epinotum* armed with two fine sharp spines, pointing outwards and backwards, *dorsal surface* longer than the declivity, *declivity* concave, smooth and shining;

sides of *mesothorax* and *epinotum* granulately punctured; *petiole* long and narrow, with a rather high node; *post-petiole* globular, broader than *petiole*; *gaster* short oval, smooth and shining. *Legs* fairly long, *femora* somewhat spindle-shaped. *Long.* 2-2.5 mm.

Described from six workers, Maffin Bay, Dutch New Guinea; in rotting sago palm log, July 1944. E. S. Ross Coll.

Soldier and worker types in California Academy of Sciences, San Francisco.

Probably larger soldiers and smaller workers occur than those described above.

#### Tribe MERANOPLINI.

*Meranoplus ostriacus* Donisthorpe, Ann. & Mag. Nat. Hist. (s. 11), xiv. p. 190 (1947).

Twenty workers, Maffin Bay, Dutch New Guinea, June 12, 17 and 22, 1944. E. S. Ross Coll.

#### Tribe MRYMECININI.

*Pristomyrmex lævigatus* Emery, Term. Füzet, xx. p. 583 (1897).

Two workers, Maffin Bay, Dutch New Guinea, June 20 and 22, 1944. E. S. Ross Coll.

*Podomyrma læviceps* Mayr subsp. *gracilis* Emery, Ann. Mus. Stor. Nat. Genova, xxv. p. 460 (1887).

Thirty-one workers, Maffin Bay, Dutch New Guinea, June 27, 1944. E. S. Ross Coll.

#### Tribe TETRAMORINI.

♂♂ *Triglyphothrix tricolor*, sp. n.

♂.—Head, funiculi of antennæ, thorax, *petiole* and post-*petiole* yellowish red, *gaster* black, mandibles, scapes of antennæ, legs, and apex of *gaster* yellow. Clothed with yellowish white short outstanding hairs.

*Head* with mandibles longer than broad, broadest just behind eyes; sides gently rounded, posterior angles rounded, posterior border slightly excised in middle; *mandibles* powerful, triangular, finely punctate and longitudinally striate, masticatory border armed with a long sharp tooth at apex, preceded by a sharp but shorter tooth, and several broader blunter teeth; *clypeus*

transverse, triangular, convex, the margin of posterior border raised in a carina which constitutes the anterior border of the antennal foveæ, anterior border rounded; sculpture consisting of fine raised longitudinal ridges, with cross striation and forming a network enclosing shallow irregular spaces, one fine, narrow, slightly raised carina extends for the dorsal area, which is very indistinct, to nearly as far as the posterior border of the head; *frontal carinæ* forming the inner border of the *scrobes*, which are fairly deep, finely transversely striate, and extending back near to posterior border of head; *eyes* moderately large, round, prominent, situated about the centre of sides of head; *antennæ* 12-jointed, *scape* curved, narrow at base, not extending as far as posterior border of head; *funiculus* getting gradually broader to apex, first joint longer, but not broader than the next seven joints which are transverse, *club* 3-jointed, second joint longer than first, last joint pointed, longer than the two preceding taken together. *Thorax* rather short and robust, narrowed behind, broadest at humeral angles, which are rounded and somewhat prominent, rather coarsely and closely punctured, no sutures are present on dorsal surface; *epinotum* armed with two rather stout, sharp, moderately long, divergent spines, *declivity* concave, smooth, armed at base with two short, sharp teeth. *Petiole* with rather a long peduncle, node punctured as in thorax; *post-petiole* smooth, globular, transverse, a little broader than petiole; *gaster* short oval, smooth and shining. *Legs* moderately long and slender. *Long.* 2.5 mm.

♀.—Colour, sculpture and clothing as in ♂.

*Mandibles* and *eyes* larger in proportion than in ♂; *ocelli* present; *median ocellus* slightly larger than the other two. *Thorax* more massive in proportion; *pronotum* transverse, narrow in middle, broader at sides; *mesonotum* large, oval, convex, slightly prominent; *præscutellum* not visible in centre; *scutellum* transverse, convex, not very prominent; *metanotum* very narrow and transverse; *epinotum* with somewhat stouter spines, slightly convergent, *dorsal surface* slightly concave, slightly longer than *declivity*, somewhat punctured, *declivity* concave, smooth and shining, the teeth at the

base shorter than in ♀; *post-petiole* slightly punctured; *gaster* somewhat larger in proportion. *Long.* 3.5 mm.

Described from four workers and four dealated females, Maffin Bay, Dutch New Guinea, June 17 and 20, 1944. E. S. Ross Coll.

Only one species of *Triglyphothrix*, *T. fulviceps* Emery, has been recorded from New Guinea before.

This species comes nearest to *T. lanuginosa* Mayr, Java, but is larger, and differs in various important particulars.

Viehmeyer [Arch. Naturg. lxxx. p. 139, 1915 (1916)] records *lanuginosa* from Singapore, but as he describes it as being brown, with a dark brown gaster, and length 2.5 mm. (whereas Mayr's insect is only 2.2 mm.—specimens of a single species of *Triglyphothrix* do not vary in size), it is clear that he had some other species before him. The colour of *lanuginosa* was described by Mayr as being reddish testaceous with a fuscous gaster.

#### Tribe DACETINI.

##### *Basiceros* sp. ?

One male, June 20, 1944, Maffin Bay, Dutch New Guinea. E. S. Ross Coll.

*Rhopalothrix* (*Rhopalothrix*) *procera* Emery, Term. Füzet, xx. p. 572 (1897).

One female and six workers, Maffin Bay, Dutch New Guinea, June 22, 1944. E. S. Ross Coll.

#### Subfamily DOLICHODERINÆ.

#### Tribe LEPTOMYRMICINI.

*Leptomyrmex wheeleri* Donisthorpe, Ann. & Mag. Nat. Hist. (s. 11), xiv. (1948).

Maffin Bay, Dutch New Guinea, one male, July. Ten workers, August 1944. E. S. Ross Coll.

#### Tribe TAPINOMINI.

*Iridomyrmex rufoniger* Lowne, subsp. *pallida* Forel, Mit. Zool. Mus. Berlin, ii. p. 22 (1901).

One worker, Maffin Bay, Dutch New Guinea, June 22, 1944. E. S. Ross Coll.



*Iridomyrmex rufoniger* Lowne var. *metallescens* Emery,  
Rev. Suisse Zool. i. p. 194 (1893).

Two workers, June 20, three males June 22, 1946.  
Maffin Bay, Dutch New Guinea. E. S. Ross Coll.

*Tapinoma melanocephalum* F., Ent. Syst. ii. p. 353 (1793).

One worker, Maffin Bay, Dutch New Guinea, June 20,  
1944. E. S. Ross Coll.

Subfamily *FORMICINÆ*.

Tribe *PLAGIOLEPIDINI*.

*Acropyga (Acropyga) molucanna* Mayr var. *opaca* Stitz ?

♂.—Not described. Brown shining, funiculi, tibiæ and tarsi lighter. Clothed with outstanding black hairs which are finer and not so close together on the scapes and legs, and grey pubescence.

*Head* broad oval, with eyes, and not counting the mandibles, about as long as broad, posterior angles rounded, posterior border slightly excised in middle; *mandibles* long, narrow, posterior border armed with six teeth, the apical one long, the two preceding it short but sharp, the three basal ones rather blunt; *clypeus* large, transverse, convex, anterior border very slightly excised in middle; *frontal carinæ* short, rather flat; *eyes* large, broad oval, convex, situated about middle of sides of head; *ocelli* small, situated on top of back of head; *antennæ* 12-jointed, *scape* long and narrow, first joint of *funiculus* not quite as long as the two following it taken together, second joint short, but not transverse, the following joints increasing slightly in length and very slightly in breadth, last joint about as long as the two preceding taken together. *Thorax* longer than broad, rather robust, narrowed in front and behind, broadest at insertion of fore wings; *pronotum* transverse, rather narrow; *mesonotum* ample, slightly overlapping the pronotum; a narrow longitudinal furrow extends a short distance from anterior border, *mayrian* furrows wanting, *parapsidal* furrows distinct; *præscutellum* not visible in middle; *scutellum* transverse, broad oval, rather flat, posterior border slightly overlapping the metanotum; *metanotum* narrow, transverse; *epinotum* with angle

between dorsal surface and declivity not marked, *dorsal surface* somewhat convex, longer than declivity, *declivity* somewhat concave; *petiole* with decumbent node; *gaster* wanting. *Legs* fairly long. *Wings* very pale brown, *veins* and *pterostigma* pale yellowish brown, *cubitus* soldered to *radius*, one long *cubital cell*, and closed *radial cell* present. *Long.* Head, not counting mandibles to base of thorax, 2.1 mm.

Described from a single male, Maffin Bay, Dutch New Guinea, August 1944. E. S. Ross Coll.

Although the gaster is missing, all the salient characters are present. It seems, therefore, advisable to describe this quite distinct ant. It is most probably the male of Stitz's var. *opaca* of *A. molucana* Mayr; the typical form being yellow.

#### Tribe CAMPONOTINI.

*Camponotus (Colobopsis) quadriceps* F. Smith, Journ. Proc. Linn. Soc. Lond. Zool. iii. p. 137 (1858).

One soldier, Maffin Bay, Dutch New Guinea, August 1944. E. S. Ross Coll.

*Camponotus (Colobopsis) vitreus* F. Smith, Journ. Proc. Linn. Soc. Lond. Zool. iv. Suppl. p. 14 (1860).

Three workers, Maffin Bay, Dutch New Guinea, June 22, 1944. E. S. Ross Coll.

*Camponotus (Colobopsis) excavatus* Donisthorpe, Ent. Mo. Mag. lxxxiv. pp. 121-22, 1948, 2 text-figs.

Two winged females, Maffin Bay, Dutch New Guinea, August 1944. E. S. Ross Coll.

*Polyrhachis (Chariomyrma) aurea* Mayr var. *obtusa* Emery, Ann. Mus. Stor. Nat. Genova, xxxviii. p. 589 (1897).

Eighteen workers, Maffin Bay, Dutch New Guinea, June 22, 1944.

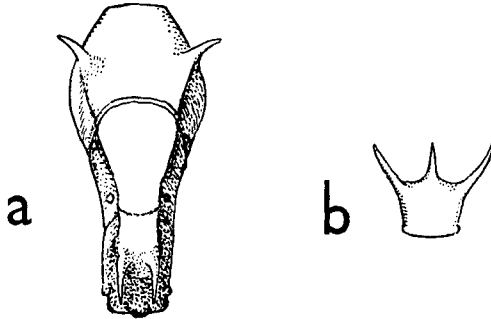
*Polyrhachis (Chariomyrma) aurea* Mayr subsp. *costulata* Emery, Ann. Mus. Stor. Nat. Genova, xxxviii. p. 590 (1897).

One worker, Maffin Bay, Dutch New Guinea, June 22, 1944.

*Polyrhachis (Myrmotherinax) abnormis*, sp. n. (Fig. 1.)

♀.—Reddish yellow, gaster yellow. A few longer and shorter, scattered, outstanding yellow hairs are present on the head, gaster, and limbs.

*Head* round oval, a little longer than broad, posterior angles rounded, posterior border slightly excised, very finely shagreened, cheeks clothed with extremely short fine decumbent hairs; *mandibles* massive, triangular, masticatory border armed with five strong teeth, the apical one a little longer and sharper; *clypeus* large, triangular, carinate in middle, anterior border slightly excised in centre with a little tooth on each side, sides sinuate; *frontal area* rather indistinct; *frontal furrow* fine, but distinct after insertion of antennæ; *frontal*



*Polyrhachis (Myrmotherinax) abnormis*, sp. n.  
(a) Thorax from above. (b) Scale.

*carinæ* sharp, raised, convergent at insertion of antennæ, and then divergent; *eyes* large, round, convex, situated on top of sides of head behind the middle; *antennæ* 12-jointed, *scape* long, curved, finely shagreened, *funiculus* pubescent, first joint considerably longer than second, gradually increasing in breadth to apex, last joint not as long as the two preceding taken together. *Thorax* margined, longer than broad, narrow, narrowest at suture between mesonotum and epinotum, all sutures very distinct, sculpture stronger than that of head, that of pronotum and mesonotum somewhat longitudinally striate; *pronotum* armed with two sharp spines projecting outwards; *epinotum* armed with two sharp erect

spines which are longer than those of the pronotum; *petiole* armed with three fine sharp spines, the centre one being a little shorter than the one on each side, contrary to all the other known species of this subgenus, sculpture similar to that of *epinotum*. *Gaster* rather short, round oval, convex, extremely finely coriaceous. *Legs* long. *Long.* 6-7 mm.

Described from two workers, Maffin Bay, Dutch New Guinea, June 20, 1944. E. S. Ross Coll.

Type in California Academy of Sciences, San Francisco.

#### Tribe ACANTHOMYOPSINI.

*Paratrechina longicornis* Latr. Fourmis, p. 113 (1803).

Fifteen workers, Maffin Bay, Dutch New Guinea, June 20 and 22, 1944. E. S. Ross Coll.

*Paratrechina (Nylanleria) vaga* Forel? Mit. Zool. Mus. Berlin, ii. p. 26 (1901).

♂.—Lighter or darker blackish brown; antennæ and legs pale brown. Slightly pubescent, and clothed with blunt outstanding hairs which are not close together, similar somewhat finer hairs are present on the scapes and tibiæ.

*Head* round, a little longer than broad, cheeks and posterior angles rounded, posterior border almost straight; *foramen* at some little distance from posterior border; *mandibles* long, narrow, pointed, crossed when closed; *clypeus* large convex, anterior border straight; *frontal carinæ* short; *frontal area* indistinct, shallow; *eyes* large, oval, convex, situated about middle of sides of head; *ocelli* small, situated at back of occiput; *antennæ* long, 13-jointed, *scape* extending considerably beyond posterior border of head, very slightly and gradually thickened to apex; first joint of *funiculus* longer and broader than second, last joint about as long as the two preceding taken together. *Thorax* longer than broad, narrowed behind, broadest before insertion of fore wing; *pronotum* narrow, transverse, *mesonotum* fairly large, convex, higher than pronotum; *præscutellum* not visible in middle; *scutellum* not very large, slightly convex, *metanotum* very narrow, transverse, slightly raised; *epinotum* rounded, slanting,

angle between dorsal surface and declivity not apparent. *Scale* of *petiole* long, narrow, inclined forward; *gaster* short oval, somewhat truncate at base, pointed at apex. *Genitalia* fairly large, *stipes* broad, flat, bluntly pointed. *Legs* fairly long. *Wings* iridescent, fringed with fine hairs, *pterostigma* and *veins* pale brown, one long *cubital cell*, and long closed *radial cell* present. *Long* 3.5 mm.

Described from two males, Maffin Bay, Dutch New Guinea, August 1, 1944. E. S. Ross Coll.