

NEW LEAFHOPPERS FROM THE UNITED STATES  
(HOMOPTERA: CICADELLIDAE)<sup>1</sup>

DOROTHY J. KNULL,  
330 E. Dunedin Road, Columbus 2, Ohio

*Stragania (Penestrangania) hualpaiana* n. sp.

Resembling *S. robusta* (Uhler) but with a distinctly swollen produced head and elytra more thickly set with short black setae.

Vertex swollen, roundedly produced over half its length before eyes, narrower than pronotum, twice as long as vertex; elytra thickly set with evenly spaced very short black setae arising from small brown round spots over entire elytra, except appendices. Pronotum transversely striate.

Color pea green, veins and feet brighter blue green; head pronotum and scutellum washed with golden yellow, elytra greenish semihyaline.

*Genitalia*: Posterior margin of ♀ last ventral segment excavated slightly from lateral angles and very slightly produced at middle, entire. Pygofer of ♂ with large hook bent in at almost a right angle at middle, tapered on outer fifth from hump on inside to sharp point; styles small, inner margins straight, outer margins curved gently from base, broadest before middle, tapering to apices which turn out abruptly and are sharptipped. Aedeagus as in *S. robusta* (Uhler).

*Length*: ♂, 4.5 mm.; ♀, 5 mm.

*Holotype* ♂, *allotype*, 18 ♂ *paratypes* and 29 ♀ *paratypes*, Hualpai Mts., Arizona, June 2, 1948; 3 ♀ *paratypes*, July 4, 1937, collected by D. J. & J. N. Knull, and placed in collection of The Ohio State University.

The three ♀ specimens taken in 1937 were sent to Dr. Beamer some time ago. He marked them "*S. (Penestrangania)* sp.—need ♂'s." The series taken in 1948 included ♂'s and proved to be an undescribed species.

*Stirellus subnubilus* n. sp.

A dark-winged species with pale, conical head.

Head as wide as pronotum; vertex slightly less than one-third longer at middle than width between eyes; less than twice as long at middle as next to eyes, eyes large. Pronotum  $2\frac{3}{4}$  times as wide as long, length at middle about  $\frac{1}{4}$  shorter than vertex; lateral margins very short, humeral margins long, posterior margin very slightly emarginate, disc irregularly wrinkled, margins, scutellum and vertex finely granulate. Elytra exceeding apex of abdomen in ♂, slightly exceeded by ovipositor in ♀.

*Color*. Vertex pale, a pair of large black discal spots, rather square; another pair on basal disc, elongate dashes; eyes gray. Pronotum dark brown on disc, darker at margins, with some yellow irregular spots along anterior margin. Scutellum with basal angles, median square between them, and apical triangle black, separated by narrow yellow lines and margins. Elytra dark brown, veins a little darker, especially apically, appendix and apical cells somewhat paler, semihyaline. Below, face and antennae pale, remnants of six short dark arcs either side, a line below clypeal suture and apical two-thirds of clypeus dark, also lower half of lorae, antennal socket area, and region bordering eyes. Venter and dorsum dark, segments narrowly yellow-margined, apex of pygofer in male pale; legs dark with pale spines; ♀, legs paler, ovipositor, basal area and spines of pygofer pale.

*Genitalia*. Female last ventral segment as long as preceding, evenly, faintly emarginate from rounded sides to middle; ovipositor exceeding pygofer by about twice its greatest width, its apex set with fine white hairs, about 7 long pale spines either side on pygofer; males with triangular valve, produced apically in a sharp pale spine; plates twice as long and broad as valve (without spine), together forming semicircle; outer submargin of each set with six long pale

<sup>1</sup>The author acknowledges with gratitude payment for plates by grant from the Ohio Academy of Science Research Fund.

spines, evenly spaced; pygofer extends a third below plates, truncate, pale, swollen inner apical angles conspicuous.

Length: ♂, 2.8 mm.; ♀, 3.5 mm.

Described from specimens taken in Mississippi in 1922 by Herbert Osborn, in the Osborn Collection, The Ohio State University.

♂ holotype, Ocean Springs, Febr. 25; allotype and 1 ♂ paratype, Febr. 2; 2 ♀ and 1 ♂ paratypes, Hurley, Febr. 25; 1 ♀ paratype, Wade, Febr. 24.

In form this species is closest to *Stirellus dixianus* var. *acutus* Thomas, but the coloring is very distinct.

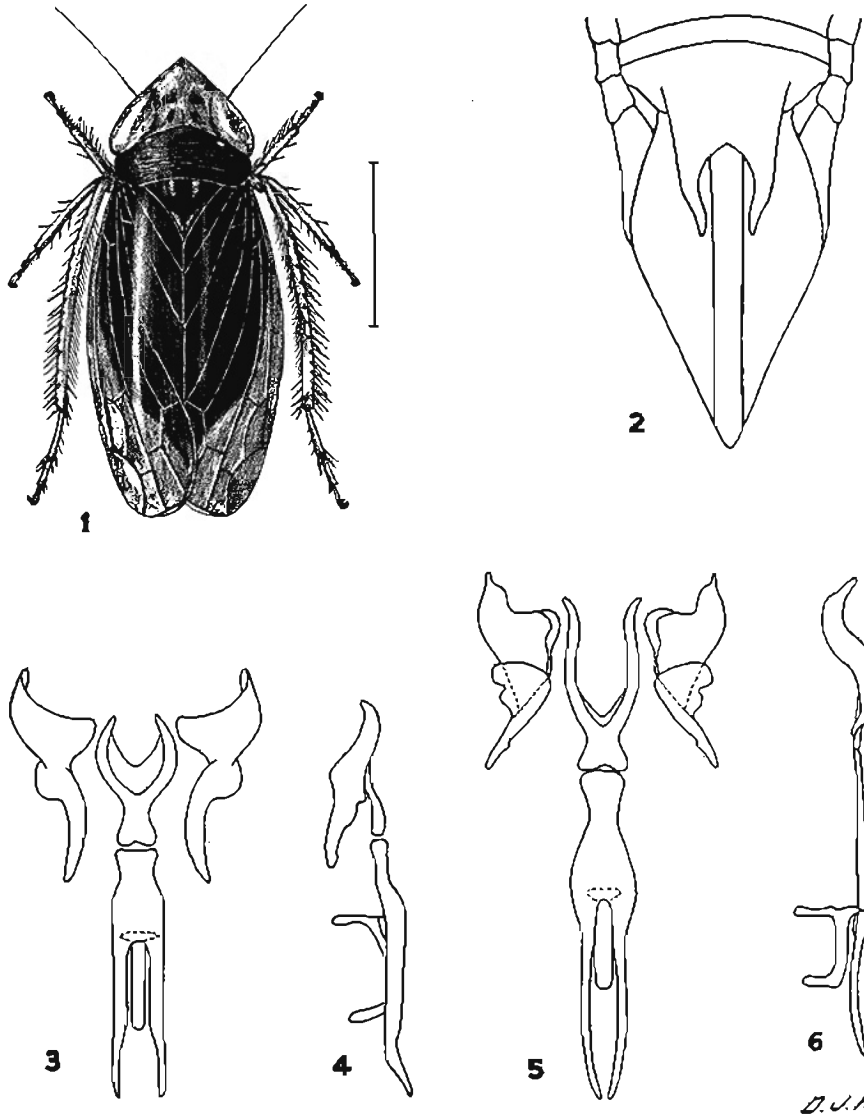


FIG. 1. *Stirellus nubilus* Knull—line = 1 mm. FIG. 2. *Spathanus excavatus* Knull—ventral view of ♀ abdomen. FIG. 3. *Spathanus aureus* Knull—ventral view inner ♂ genitalia. FIG. 4. *Spathanus aureus* Knull—lateral view inner ♂ genitalia. FIG. 5. *Spathanus acutus* Knull—ventral view inner ♂ genitalia. FIG. 6. *Spathanus acutus* Knull—lateral view inner ♂ genitalia.

D. J. K.

Three species are described in the tightly knit genus *Spathanus*, two from California and one from Nevada. Creosote bush (*Larrea tridentata* var. *glutinosa* Jepson) is a food plant of all species known. All specimens are placed in the collection of The Ohio State University.

***Spathanus mirus* (Van Duzee)**

*Saphoideus mirus* Van Duzee, Proc. Calif. Acad. Sciences, 14:419-20, 1925.

*Osbornellus mirus* (Van Duzee), DeLong & Knull, Check List of Cicadellidae, Grad. Studies, The Ohio State University Press, 1:32, 1945.

*Spathanus acuminatus* (Baker), Oman, Jour. N. Y. Ent. Soc. 55:61, 1947.

I am indebted to Dr. P. W. Oman and Dr. Edward S. Ross for their help in determining the status of *Spathanus mirus* (Van Duzee). My study of specimens along with their comments, and Dr. Ross's notes on the type, convince me that *S. mirus* is a valid species.

***Spathanus acutus* n. sp.**

Immediately distinguished by pale vertex, pronotum, scutellum and basal third of clavus in distinct contrast to darker remainder of elytra. In ♂ plates are longer than in *acuminatus*, attenuate apices almost reaching apex of pygofer.

♂. Vertex roundedly produced, one-third broader at base than median length; pronotum longer than vertex, hind margin almost straight; elytra considerably longer than abdomen, apices rounded, apical cells short.

*Color.* Vertex golden, median longitudinal impressed black line from base two-thirds distance to apex; eyes dark brown, front dark with about eight pale arcs either side, dark coloring of front showing a little from above; pronotum sordid yellow, more golden anteriorly, with some irregular translucent mottling; scutellum yellow, basal angles gray, transverse black impressed line before apex; elytra milky white on basal third, below marked with fuscous veins and cells of corium, apical and antepical cells with discal round pale spots surrounded irregularly with dark brown, posterior two-thirds of clavus dark brown with two oval pale spots along suture. Below brown, dorsum darker.

Last ventral segment of ♀ about length of preceding, lateral angles incised half their length next to broad produced median process, a little wider than a third, narrowed only gently toward apex which is shallowly roundly excavated between two sharp teeth; this process extends from base of segment one-half length of ovipositor, shorter than in *acuminatus*.

♂ plates long, triangular, attenuate on apical third, almost attaining apex of pygofer; styles short, broad at base, narrowed and produced on inner angle in small narrow apex shaped like a toe-dancer's foot, the toe pointed down and out. Aedeagus with pair of long slender, straight processes narrowed to sharp incurved apices, exceeding attenuate plate tips in length; dorsal portion gently curved, attached near separation point of ventral processes with a short arm, tube extending two-thirds length of processes, turned dorsad at apex about as far as basal arm. In lateral view ventral aedeagus slightly sinuate, broad at base, blades narrow.

*Length:* ♂, 4.5 mm.; ♀, 4.75 mm.

Described from specimens taken from creosote bush by D. J. & J. N. Knull. ♂ holotype, Santa Rosa Mts. (Dos Palms), Riverside Co., Calif., June 15, 1946; 1 ♂ and 1 ♀ paratype, same locality, June 15, 1948; 3 ♀s, allotype and paratypes, Palm Springs, Riverside Co., Calif., June 30, 1946; 1 ♂ paratype, June 15, 1948.

***Spathanus aureus* n. sp.**

Above and below golden brown in color with markings faint but similar to those of *acuminatus*.

♂. Plates long, triangular, attenuate, apical third not quite as long as pygofer, dark oblique dash on disc; styles heavy, inner angle produced in a long heavy blade curved out, blade almost as long as basal portion; aedeagus shorter and stouter than in *acutus* and *acuminatus*, ventral paired processes slightly sinuate, narrowed on apical half, apices dark, sharp; aedeagus shallowly U-shaped; in lateral view apices of ventral arms turned ventrad. Styles are unique character.

♀. Segment as in *acutus*, concave, a little shorter, apex narrowed more abruptly.

*Length:* ♂ 4.75 mm.; ♀, 5 mm.

♂ holotype Shavers Well, Calif., Riverside Co., June 17, 1946; allotype and 1 ♂ paratype same data; 1 ♂ and 1 ♀ paratype, Yuma, Arizona, June 11, 1937; 1 ♂ paratype, Morongo Valley, Calif., Riverside Co., June 5, 1946. Collected by D. J. & J. N. Knull.

***Spathanus excavatus* n. sp.**

♀. Short, robust, pale golden brown, veins of apices of elytra darker, five reflex veins on costa outside outer anteapical cell.

Last ventral segment with lateral lobes one-third longer than preceding, rounded, incised one-half length next to median process; process twice as long as broad, occupying median half of segment, tapered gradually from base, apex deeply excavated half way to base, leaving two comparatively slender points which approach one another at their apices; median projection from base less than half length of pygofer.

Length: ♀, 4.5 mm.

Described from 1 ♀ holotype, Las Vegas, Nev., June 30, 1937, D. J. & J. N. Knull.

The last segment of the ♀ places this nearer to *S. mirus* (V. D.) than to other members of the genus, but it is shorter, paler and more robust than *mirus*.

***Erythroneura flexibilis* n. sp.**

General ground color semihyaline to white tinged with yellow anteriorly, marked with bright red. Vertex with short red transverse rectangle at apex, two basal oval pale spots surrounded except at base by irregular red markings which join at middle. Pronotum with median heart-shaped spot and an irregular spot behind either eye. Scutellum with tip red and basal angles yellow narrowly red outlined. Clavus with broad basal anchor-shaped spot and one before apex. Corium with angulate mark arising on costa before humeral angle, another irregular and broken angulate vitta arising on costa at anterior end of plaque, more or less surrounding it and ending on mesal margin near tip of clavus in an enlarged area. Crossveins and adjacent longitudinal veins red, apices of elytra smoky. Large black spot in base of cell  $M_3$ . Below with spot before apex of vertex, area above antennae, face before clypeus and posterior tibiae red, remainder stramineous.

♂ *genitalia*. Pygofer hook single, of medium length, turned in on outer third, sharp-pointed. Style with small foot, base curved, heel about a right angle, anterior point less than right angle projecting outward; posterior point very slightly longer than base of foot, fine, sharp, meeting base at less than right angle. Aedeagus of medium length, straight, in ventral view with lateral rough teeth, in lateral view with truncate tip.

Length: 3 mm.

♂ *holotype*, Delaware Co., Ohio, March 18, 1945; ♂ *paratypes*, Delaware Co., O., 1 March 18, 1945, 1 March 25, 1945, 1 August 13, 1944; 3 Highland Co., O., June 6, 1945, all collected by D. J. and J. N. Knull; 2 Hartwick St. Park, Mich., July 19, Mary Auten; 1 Cranberry Lake, N. Y., August 9, 1920, Osborn & Drake (in the Osborn Collection, The Ohio State University).

Runs to *E. torella* Rob. in Beamer's key\* but differs in more abrupt turn in pygofer hook, size of aedeagus, and shape of style.

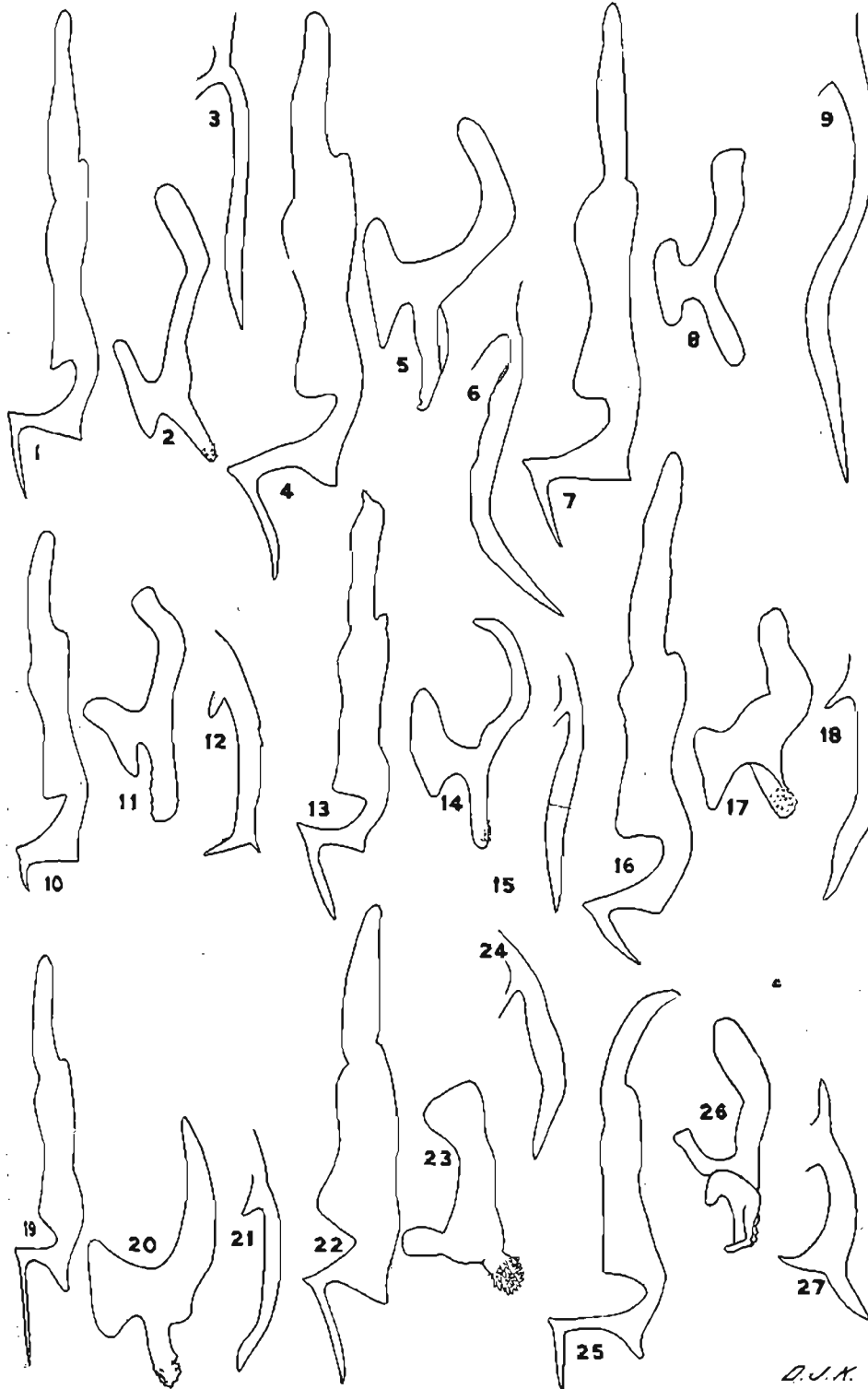
***Erythroneura dimidiata* n. sp.**

Small, general round color semihyaline to yellowish white marked with orange. Vertex with five white spots narrowly bordered with orange. Pronotum with median Y-shaped mark not reaching either edge, angulate vitta behind either eye. Scutellum with red apex, yellow basal angles. Clavi with basal anchor-shaped spot, and one before tip; coria with spot on costa before base, irregular blotches surrounding three sides of costal plaque and spot below apex of clavus. Crossveins and adjacent longitudinal veins narrowly red. Faint black spot in base of cell  $M_4$ , tips of elytra faintly smoky. Venter white and stramineous with some pink tinges.

\*R. H. Beamer, Can. Ent., 64: 174, 1932.

## EXPLANATION OF PLATE II

FIGS. 1, 2, 3. Style, aedeagus, pygofer hook, *Erythroneura malaca* Knull. FIGS. 4, 5, 6. Style, aedeagus, pygofer hook, *Erythroneura hymettana* Knull. FIGS. 7, 8, 9. Style, aedeagus, pygofer hook, *Erythroneura proluxa* Knull. FIGS. 10, 11, 12. Style, aedeagus, pygofer hook, *Erythroneura uvaldeana* Knull. FIGS. 13, 14, 15. Style, aedeagus, pygofer hook, *Erythroneura severini* Knull. FIGS. 16, 17, 18. Style, aedeagus, pygofer hook, *Erythroneura flexibilis* Knull. FIGS. 19, 20, 21. Style, aedeagus, pygofer hook, *Erythroneura direpta* Knull. FIGS. 22, 23, 24. Style, aedeagus, pygofer hook, *Erythroneura luculenta* Knull. FIGS. 25, 26, 27. Style, aedeagus, pygofer hook, *Erythroneura dimidiata* Knull.



D.J.K.

♂ *genitalia*. Pygofer hook single, curved in, with apex broadened and separated in diverging wings, outer a continuation of base, inner not quite as large and turned up, both sharp. Style with large thin foot, base straight, heel large, rectangular, anterior point about a right angle, posterior point about half length of foot, narrow, sharp, parallel-sided. Aedeagus of medium length, broad, with narrow transverse lip at apex.

Length: 2.5 mm.

*Holotype* ♂ from Hocking Co., Ohio, June 28; 3 ♂ *paratypes* taken in Hocking Co., Sept. 16, 1943, Sept. 14, 1944, and May 8, 1938 by D. J. & J. N. Knull. Types in collection of author.

This species runs to *E. californica* Beamer<sup>3</sup> but resembles *E. minor* Beamer more closely in character of inner male genitalia.

*Erythroneura hymettana* n. sp.

Background white marked with red, brown and black. Vertex brown with elongate median spot pale, an apical red streak on either side of which is a small white spot. Pronotum tan, paler at posterior margin and darker in area surrounding three marginal anterior pale spots. Scutellum with basal angles tan and apex shining black, slightly raised as seen from side. Elytra with two red dots, one claval and one corial, at humeral angles, spots either end of costal plaque, elongate red streaks somewhat broken into dots in an oblique transverse band from plaque to apex of clavus, this band is parallel to one formed by red crossveins and adjacent longitudinal veins, between bands opaque white. A large quadrate gray-brown spot covering middle of clavus, another, large and just below it on corium, extending to costal plaque which is hyaline. Apices dark. Small black dot at base of cell  $M_4$  and a dark streak at posterior end of plaque. Below stramineus, mesothorax dark, also dorsum of abdomen, and anterior margins of ventral abdominal segments; last ventral segment and apices of plates in male also dark with pale band between.

♂ *genitalia*. Pygofer hook longer than pygofer, ribbon-like, narrowed at base, broadening slightly, turning in a little at middle, then out on sharply pointed apical fourth. Style with large foot, base strongly curved, heel pointed down, less than a right angle; anterior point small and projecting out; posterior point longer than foot, tapering to sharp-pointed apex which turns out. Aedeagus long, narrow, broader at base and tapering to tip which is turned sharply dorsad in a small lip.

Length: 3.1 mm.

Described from 4 ♂ specimens collected by D. J. & J. N. Knull, 2 from Hocking Co., O., holotype, April 11, 1945, paratype, Sept. 14, 1945; two paratypes, Fairfield Co., Ohio, May 12, 1947.

The unique coloring and raised blackened tip of scutellum, which is reminiscent of the genus *Hymella* make this form very outstanding. It may be related to *E. lunata* McAtee, and fits the description fairly well, but the genitalia are quite distinct from those illustrated by Beamer<sup>3</sup> (Fig. 5), and nearer to those of *E. septima* Beamer<sup>3</sup> (Fig. 69). The dark markings in *E. hymettana* are much broader, and more diffuse than in either of the two species, and it is more definitely a member of the Maculata group.

*Erythroneura luculenta* n. sp.

Large, background white, semihyaline with orange to red markings. Vertex more sharply produced than in most members of the Maculata group and with more pointed apex. Vertex marked with five oral white spots surrounded by vittae in which red coloring is accentuated in two median basal and median apical dashes. Pronotum white with median heart-shaped spot and small angulate mark behind either eye. Scutellum pale in holotype, red tipped and yellow basal angles outlined in red in some specimens. Clavus with anchor spot on basal half, spot before apex; small humeral spot, and angulate vitta on corium surrounding plaque and extending over to area below apex of clavus. Outer crossveins and adjacent longitudinal veins reddened, latter only briefly and before crossveins. Large round black spot in base of  $M_4$  and smaller one at posterior margin of plaque. Tips of wings clouded faintly.

♂ *genitalia*. Pygofer hook heavy on basal half, tapering to sharp tip on outer half which is curved in distinctly. Style small, base curved, heel large, protruding, less than right angle;

<sup>3</sup>R. N. Beamer, Can Ent., 64: 174, 1932.

anterior point small, projecting; posterior point longer than foot, narrow, tapering to fine point, meeting base at less than right angle. Aedeagus short, quadrate, rough lateral edges, appearing cut off in lateral view, and broader at tip than at base; almost quadrate in ventral view.

Length: 3.2 mm.

♂ holotype, Oak Creek Canyon, Arizona, August 1, 1938, allotype August 15, 1938; ♀ paratypes, 1 August 1, 1938, 2 August 15, 1938, 1 July 13, 1940; 2 ♀ paratypes, Flagstaff, Arizona, July 30, 1938.

Runs to *E. dira* Beamer in key<sup>4</sup> but is closer in general appearance to *E. torrella* Rob. from which it differs chiefly in form of aedeagus.

*Erythroneura uvaldeana* n. sp.

Rather small species with ground color white to cream, semihyaline on elytra, marked with golden orange to scarlet. Vertex with narrow elongate median pale oval margined entirely and evenly with broad vitta which on either side at middle has fainter lateral extensions to eyes. Pronotum with large median Y almost reaching both margins, large triangular spot behind each eye. Scutellum with basal angles yellow orange and apex orange. Elytra with basal anchor spot on clavus, another before apex; irregular marking extending from below outer humeral angle on corium, around costal plaque and from its lower inner corner obliquely to area below apex of clavus. Outer crossveins and adjacent longitudinal veins reddened, inner pale. Small black spot in base of cell M<sub>4</sub>, a minute one at lower edge of plaque; tips of tegmina fumose. Highly marked specimens taken in June have elytra vittae broad and continuous.

♂ genitalia. Pygofer hook narrow to outer half, where it broadens slightly and forms two spines at its apex, outer a short sharp spine continuous with outer margin, inner much larger, and turned in abruptly at not much more than a right angle from outer spine. Style with medium foot with fairly heavy, straight base; rectangular heel and anterior point; posterior point a short sharp incurved barb, about  $\frac{1}{4}$  length of foot. Aedeagus as long as foot, a straight narrow tube from any view.

Length: 2.8 mm.

Described from twelve specimens from Uvalde, Texas collected by D. J. & J. N. Knull. ♂ holotype and allotype, 2 ♂ and 4 ♀ paratypes, August 4, 1937; 2 ♀ paratypes, June 3, 1939, 2 ♀ paratypes, June 26, 1940. These were taken from oak in Garner Park.

Near *E. bispinosa* Beamer, but differing in form of apical spines of pygofer hook and form of aedeagus.

*Erythroneura severini* n. sp.

General ground color creamy white, semihyaline elytra, markings orange, small and distinct. Vertex with faint traces of median orange-encircled oval; pronotum with small median triangle in middle; angles of scutellum deeper cream. Clavus with narrow basal anchor-shaped vitta not touching any margin and small spot before apex; corium with four spots around plaque and one above cell M<sub>4</sub>; crossveins irregularly red, dark spot on base of cell M<sub>4</sub> small. Venter cream and white.

♂ genitalia. Pygofer hook single, stout, broader near middle, slightly S-curved, tapered to sharp apex; style with narrow foot, base straight, heel a little sharper than a right angle, anterior point projecting slightly, posterior point longer than foot, narrow, straight-sided, sharp. Aedeagus long and narrow, straight, with a few spines in front.

Length: 2.5 mm.

Holotype, ♂, allotype, 3 ♂ and 1 ♀ paratypes, Hot Springs, S. D., Sept. 17, 1919; 1 ♂ and 1 ♀, August 27, 1922, Raspberry, H. C. Severin. Two paratypes sent to Dr. Severin, for whom the species is named.

Resembles *knightsi* Beamer, but has narrower aedeagus and shorter pygofer hook. Runs to *E. usitata* in Beamer's key.<sup>4</sup>

*Erythroneura direpta* n. sp.

General ground color yellowish white to semihyaline. Markings orange to red, diffuse. Vertex with three white spots surrounded by narrow irregular orange bands. Pronotum with

<sup>4</sup>R. H. Beamer, Can. Ent., 64: 174, 1932.

median Y-shaped vitta and spot back of each eye. Scutellum with orange spot on tip and basal angles yellow. Clavus with basal anchor-shaped spot and one near apex; corium with spot on costal at humeral angle, irregular one at anterior end of costal plaque, two streaks at posterior end, rectangular one at clear space opposite apex of clavus and a streak before base of cell  $M_4$ . Medium sized black spot in base of cell  $M_4$  and small one in posterior end of plaque. Venter cream.

♂ *genitalia*. Pygofer hook single, heavy, straight, turned in slightly toward tip, very slightly enlarged before apex; style with large foot, base curved, heel prominent, anterior point distinct, blunt, posterior point longer than foot, narrow, sharp-tipped, inner margin irregular. Aedeagus oblong with spiny irregular apex, longer behind than in front in lateral view.

*Length*: 2.5 mm.

*Holotype* ♂ Hocking Co., Ohio, July 16, 1945; *allotype*, April 26, 1938; *paratypes*, 2 ♂, April 17, 1938; 3 ♂ and 1 ♀, April 26, 1938; 1 ♂, May 8, 1937; D. J. & J. N. Knull. 5 ♂ *paratypes*, Ashland Co., Ohio, Sept. 29, Mary Auten. Delaware Co., Ohio, 3 ♂, May 19, 1943, Sept. 4, 1944, Oct. 3, 1943, D. J. & J. N. Knull. 3 ♂, Knox Co., Ohio, August 28, 1933 Mary Auten; 3 ♂, Scioto Co., Ohio, June 1, 1945, D. J. & J. N. Knull.

Close to *E. certa* Beamer in character of inner male genitalia and also resembles *E. diva* Beamer, but differs from the former in longer base of style, and from latter in longer aedeagus and pygofer hook.

#### *Erythroneura prolixa* n. sp.

General ground color white marked with broad orange vittae. Vertex with three oval imperfectly orange-margined pale spots. Pronotum with median Y reaching both margins, large angular spot behind each eye. Scutellum with apex orange, basal angles yellow, outer margins orange. Clavus with basal broad anchor-shaped spot, elongate spot before apex; corium with diagonal vitta below humeral angle to anchor spot of clavus, one on three sides of plaque with diagonal extension toward apex of clavus. Crossveins red, black dash at posterior end of plaque and large round black spot in base of cell  $M_4$ . Below, white and cream.

♂ *genitalia*. Pygofer hook extraordinarily long, almost as long as style, gently S-curved, wider at inner curve near middle, sharp-tipped. Style large, base broad, straight; heel large, projecting slightly, anterior point projecting about 45° angle, posterior point narrow, sharp, straight, meeting base at about a right angle, a little shorter than base. Aedeagus long, smooth, oval.

*Length*: 3 mm.

♂ *holotype*, Hocking Co., Ohio, May 5, D. J. & J. N. Knull; 1 ♂ *paratype*, Pickaway Co., Ohio, Febr. 20, J. S. Caldwell.

Nearest *E. incondita* Beamer, from which it differs in shape of aedeagus and width of style.

#### *Erythroneura malaca* n. sp.

Anterior ground color cream, of elytra white semihyaline, markings pale orange, eyes dark. Usual markings of head, pronotum and scutellum faintly indicated. Clavus with basal anchor and spot before apex, corium with dot at humeral angle, two irregular parallel bands originating at each end of plaque and extending, anterior one to spot near apex of clavus, and posterior to point below apex of clavus, outer crossvein bright red, black spot in base of cell  $M_4$  and dot in posterior margin of plaque, apices smoky hyaline. Below cream colored.

♂ *genitalia*. Pygofer hook long, straight, heavy, a little broader below middle, tapered to sharp tip. Style with large slender foot, base straight, heel protruding, anterior point short, less than right angle, posterior point meeting base at less than right angle curve, directed in, almost as long as base, narrow, sharp. Aedeagus triangular, tapered to spiny tip, longer than broad.

*Length*: 2.75 mm.

♂ *holotype*, Highland Co., Ohio, June 6, 1945, D. J. and J. N. Knull; 1 ♂ *paratype*, Lawrence Co., Ohio, April 29, J. S. Caldwell.

Near *E. macra* Beamer but with stouter, straighter pygofer hook.

All specimens of *Erythroneura* are retained in collection of author unless other deposition is mentioned.