

## TWO NEW SPECIES OF OSBORNELLUS FROM THE SOUTHWESTERN UNITED STATES

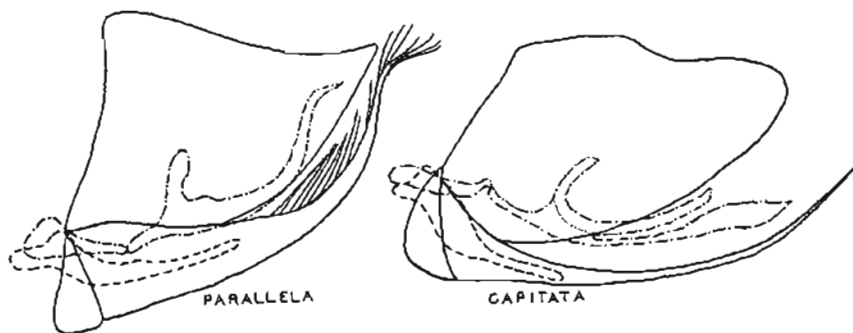
DWIGHT M. DELONG and DOROTHY JOHNSON KNULL,  
The Ohio State University,  
Columbus, Ohio

### *Osbornellus capitatus* n. sp.

Resembling *scalaris* in appearance and coloration but smaller and with distinct male genitalia. Length, 4.5-5 mm.

Vertex rather sharply angled, basal width between eyes only about two-thirds as great as median length.

Color: Pale brownish. Vertex with a marginal brown line just below apex of vertex and a narrow line almost transverse between anterior margins of ocelli. A median white spot encircled by brown just posterior to this line. Ocelli white, heavily margined with brown. Elytra subhyaline, dusky at apex, veins brown and with three brown spots along commissural line on clavus of each.



Lateral and ventral views—male abdomens; apical portion showing aedeagus and styles of *parallela* and *capitata* in position.

Genitalia: Female last ventral segment strongly produced, posterior margin rounded, with a slight shallow excavation at middle. Male style broad at base sloping to inner margin where at half its length a very slender straight apical finger process is formed which is produced half the length of style. Aedeagus in lateral view broadened near base where a short dorsal curved process arises. The shaft is tapered to a blunt apex. On ventral surface a slender process arises from the thickened portion which expands into a broad apical portion one-third the length of the process and which is abruptly narrowed to a sharp pointed tip.

Holotype male Adalanto, Calif., July 30, 1940, and allotype female, Pine Valley, Calif., July 27, 1940, both collected by Dorothy J. and J. N. Knull.

**Osbornellus parallelus** n. sp.

In form and size resembling *auronitens* with marginal lines above and below margin of vertex and with distinct male genitalia. Length, male, 5.5 mm.

Vertex bluntly angled, slightly wider between eyes than median length.

Color: Pale brownish, vertex with a narrow brown line just above and another just below margin. A median transverse line about half the width of vertex between ocelli and appearing parallel to marginal line. There is a faint indication of an orange transverse band between the eyes. Elytra pale brownish subhyaline, with apical cells and costal veinlets heavily brown margined. Apex of clavus and inner apices of claval veinlets heavily marked with a brown spot.

Genitalia: Male style broad at base rapidly tapered to inner margin to form a narrow finger-like process at one-third its length which is produced apically two-thirds of the length of the style. Aedeagus composed of a single shaft with a small dorsally produced process near base. The shaft is long, tapered to a sharp pointed apex and is curved upward then apically near apex.

Holotype male from Hauchuca Mts., Ariz., collected Sept. 9, 1938, by Dorothy J. and J. N. Knull.

---

**PERSONAL BIBLIOGRAPHIES**

Under this head we will be glad to list personal bibliographies of members of this society. They must be in some printed form such as mimeograph, lithoprint, photolith, planograph or some similar process or actually printed. They must be available from the author on request.

We believe a development of this type of bibliographic service can be of considerable value. Our copies of personal bibliographies sent for notice in the *Annals* are deposited in the Ohio State University Library, Botany and Zoology Division. We list:

"**Millard Carr Van Duzee, in Memorium,**" by E. P. Van Duzee, pp. 90-96 and portrait, vol. X, No. 2 (April, 1934), *The Pan-Pacific Entomologist*. Price \$0.75. *The Pan-Pacific Entomologist*, California Academy of Sciences, Golden Gate Park, San Francisco, Calif.

"**The Life and Works of Edward Payson Van Duzee,**" by E. O. Essig and R. L. Usinger, pp. 145-192 and portrait, vol. XVI, No. 4 (Oct., 1940), *The Pan-Pacific Entomologist*. Price as for preceding also reprint from Department of Entomology and Parasitology, University of California, Berkeley, Calif.

"**List of Zoological Publications of J. Linsley Gressitt, 1934-1940.**" Lingnan Natural History Survey and Museum, Lingnan University (Canton, China), care of Hong Kong University, Hong Kong, China.

"**Mr. Donisthorpe's Publications in 1933.**" "**Mr. Donisthorpe's Publications in 1937 and 1938.**" "**Mr. Donisthorpe's Publications in 1939 and 1940.**" Printed folders from the author, Horace St. John K. Donisthorpe, F.Z.S., 322 Great West-road, Heston, Middlesex, England.

"**Vernon Lyman Kellogg,**" *Ann. Ent. Soc. Amer.* 33 (4): 599-607, portrait. Price \$0.15, "*The Annals,*" Zool. and Ent. Dept., O. S. U., Columbus, Ohio.

"**Doctor A. K. Mordwilko,**" *Ann. Ent. Soc. Amer.* 33 (3): 487-494, portrait. Price \$0.10. See preceding address.