

A NEW SPECIES OF TYPHLOCYBA (HOMOPTERA  
CICADELLIDAE) INJURIOUS TO PRUNE IN  
THE PACIFIC NORTHWEST.

D. M. DeLONG AND RALPH H. DAVIDSON,  
Ohio State University, Columbus, Ohio.

*Typhlocyba pruni* n. sp.

Resembling *T. pomaria* McA. in form and general appearance and apparently previously confused with it. But with a brighter yellow appearance, head more bluntly and broadly rounded and male genital character distinct. Length 7 mm.

Vertex bluntly broadly rounded, strongly curved in front.

*Color:* Male, pale yellow, wings bright yellow for two-thirds their length, apical third smoky; female, milky white usually without yellow markings.

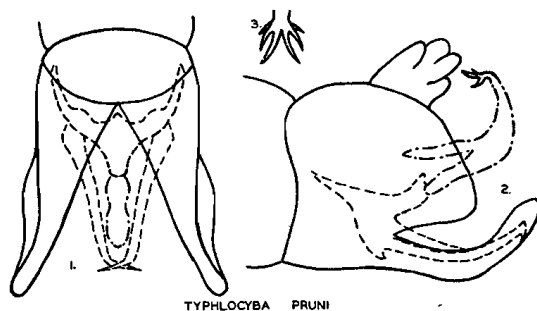


FIG. 1. Ventral view of male genitalia in position.  
FIG. 2. Lateral view of male genitalia in position.  
FIG. 3. Dorsal view of apex of oedagus (enlarged), showing arrangement of spines.

*Genitalia:* Female, last ventral segment roundly produced, male, valve short, broad, transverse, slightly emarginate at middle. Plates broad at base, abruptly narrowed at about one-third their length and produced in rather long narrow tips which are upturned and slightly divergent. Styles long and narrow. Apices turned inward and sharp pointed, the long tips overlapping when in natural position. Oedagus directed upward and anteriorly at the apex, the apical portion composed of two branched and two unbranched spines. The inner two are unbranched and are longer than the outer two which are branched. From the dorsal view the two inner

spines are divergent toward the tip while the dorsal portion of the outer spines curve slightly inwardly. From the lateral view the lower fork of the outer spine can be seen projecting ventrally.

Described from a series of specimens collected at Parma, Idaho, and Opportunity, Washington. The senior author collected specimens at Parma in the summer of 1930, while collecting in the field with Mr. Haegele and a large series has been recently forwarded from both localities by Mr. R. W. Haegele of the Parma Station. These were collected in July and September and were all taken from cultivated prune.

Holotype male and allotype female from Parma, Idaho.