

A NEW SPECIES OF CICADELLIDÆ FROM WISCONSIN.

DWIGHT M. DeLONG.

Deltocephalus marginatus n. sp.

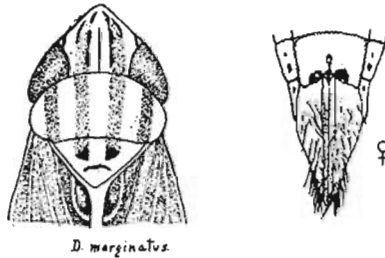
Closely resembling *D. bilineatus*, but with longer head and a black transverse band across margin of vertex between the eyes. Length 4 mm.

Vertex produced, twice as long at middle as next the eyes, width between the eyes equalling the length. Antennæ two and one-half times as long as vertex. Pronotum as long as vertex, produced and very strongly curved on anterior margin. Elytra quite long and slightly flaring; middle antiapical cell very long, constricted along central half.

Color: Creamy white with testaceous and dark markings. Face uniform creamy white, unmarked. Vertex with black, longitudinal, median, impressed line on middle half; two pale testaceous bands arise about one-third the distance from apex and extend across pronotum to middle of apex, where they end in two black spots on the disc. Each of these is bordered interiorly on the vertex by a fine black line, broken into spots, which converge at the apex; also partially bordered exteriorly by a small black dash. A black transverse band extends across the margin of vertex and recurves onto vertex at either end along the eyes. Pronotum with four longitudinal testaceous bands. Veins of clytra white; the clavus and claval veins along suture broadly margined with testaceous. Outer margins of inner and two outer apical cells and adjoining costal cell, fuscous. Venter pale yellow, female segment with a large round black spot either side of notch.

Genitalia: Female last ventral segment longer than preceding, with posterior margin broadly notched, sides of notch somewhat convexly rounded.

Described from two specimens from Amery, Wisconsin, collected August 13, 1916. In the Wisconsin list these were considered as *D. bilineatus* but with additional study it seems that they are quite distinct in the points mentioned. It may prove to be only a variety of that species, but I believe deserves specific rank.



D. marginatus