

# ILLUSTRATIONS

RECORDED  
IN AMERICA

OF

## NATURAL HISTORY.

Wherein are exhibited

Upwards of Two Hundred FIGURES

OF

### EXOTIC INSECTS.

According to their different GENERA;

Very few of which have hitherto been figured by any AUTHOR,

Being engraved and coloured from NATURE, with the greatest ACCURACY,  
and under the AUTHOR'S OWN INSPECTION,

On FIFTY COPPER-PLATES.

With a particular DESCRIPTION of each INSECT:

Interspersed with REMARKS and REFLECTIONS on the NATURE and PROPERTIES  
of many of them.

By D. DRURY.

To which is added

A TRANSLATION into FRENCH.

Each Mofs,  
Each Shell, each crawling Insect, holds a Rank  
Important in the Plan of Him, who fram'd  
This Scale of Beings; holds a Rank, which lost  
Would break the Chain, and leave behind a Gap  
Which Nature's self would rue.

STILLINGFLEET.

VOL. III.

L O N D O N:

Printed for the AUTHOR,

And sold by B. WHITE, at Horace's Head in Fleet-street. 1782.

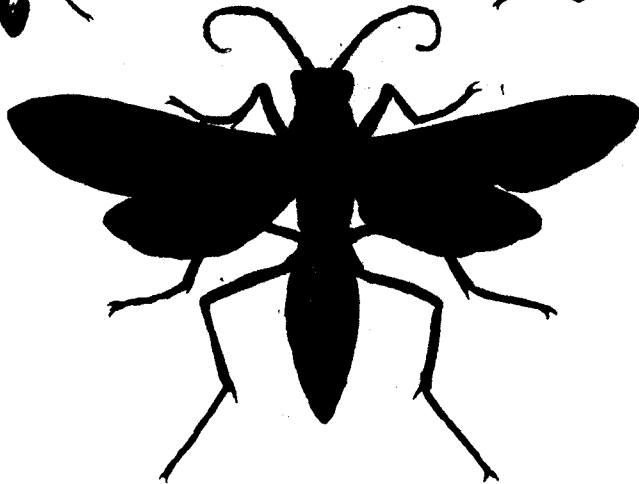
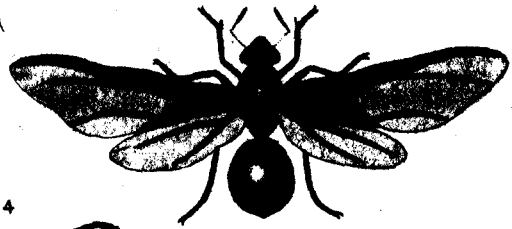
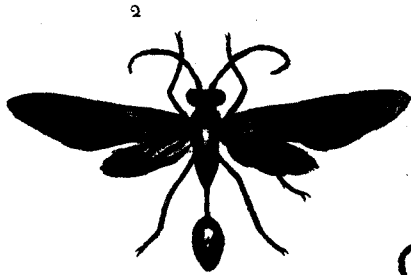
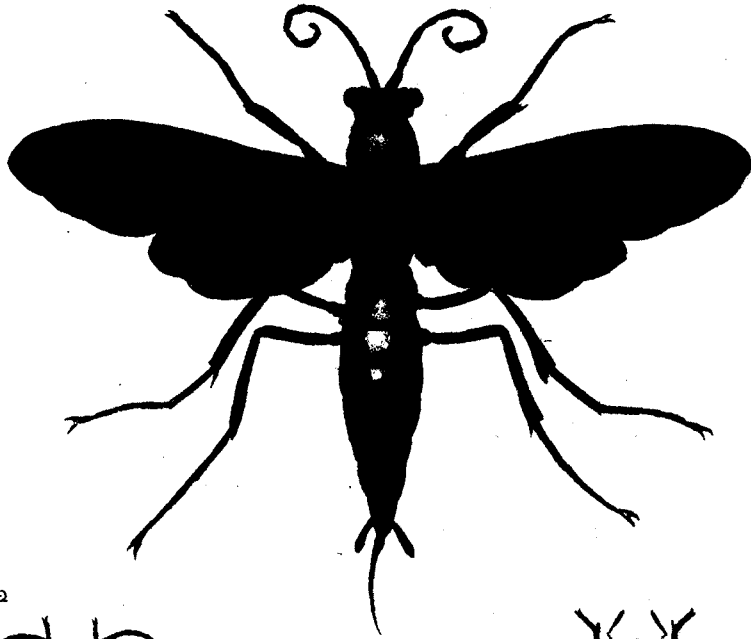


FIG. III. Expands fully two inches and a half.

The *Antennæ* are small, thread-like, and shorter than the thorax.—The *Head* is dark brown, small and flat, being armed with strong jaws.—The *Eyes* are small, round, and black. The three little eyes are very distinct.—The *Thorax* and *Abdomen* are dark brown, and covered with a pile like velvet.—The *Wings* are brown and diaphanous.—All the *Legs* are the same colour as the body, without any spines at any of the joints; neither is there any thing like a scale placed between the thorax and abdomen.

It was brought me from the Musquito shore, at the bottom of the Bay of Mexico.

I have not seen it any where described.

FIG. IV. Expands nearly three inches and a quarter.

The *Head* is black, with the three little *Eyes* at top very distinct.—The *Mouth* is armed with transverse jaws, and four *Palpi* like the preceding.—I cannot discern any *Tongue*.—The *Eyes* are oblong, prominent, and shining.—The *Antennæ* curled, jointed, and shorter than the thorax, consisting of eleven articulations.—The *Wings* are yellow-brown, and diaphanous, the tips being black.—The *Thorax* and *Abdomen* are black.—All the *Thighs* are black.—The *Shins* and *Beavers* are yellow brown, the latter consisting of five articulations besides the claws.

I have received this species from several parts of the coast of Africa.

I have not met with it in any author.

FIG. III. Deploye amplement deux pouces et demi.

Les *Antennes* sont petites en fil, et plus courtes que le corcelet.—La *Tête* est brune foncée, petite et plate, étant armée de deux mâchoires fortes.—Les *Yeux* sont petits, ronds, et noirs. Les trois petits *Yeux* sont très distincts.—Le *Corcelet* et l'*Abdomen* sont brun foncés, et couverts des petits poils comme le velours.—Les *Ailes* sont brunes et diaphanes.—Tous les *Pieds* sont de la même couleur que le corps, sans épines à aucunes jointures, il n'y a point aucune chose comme une écaille placée entre le corcelet et l'abdomen.

Il me fut apporté de la côte Mosquite, au fond de la Baie de Mexique.

Je ne l'ai trouvé aucunement décrit.

FIG. IV. Deploye presque trois pouces et un quart.

La *Tête* est noire, avec les trois petits *Yeux* au sommet très distincts.—La *Bouche* est armée de mâchoires transversales, et quatre *Antennules* comme le precedent.—Je ne puis appercevoir une *Langue*.—Les *Yeux* sont oblongs, saillants, et luisants.—Les *Antennes* bouclées, articulées, plus courtes que le corcelet, et composées de onze articulations.—Les *Ailes* sont jaune-brunes, et diaphanes, les bouts étant noirs.—Le *Corcelet* et l'*Abdomen* sont noirs.—Toutes les *Cuisses* sont noires.—Les *Jambes*, et les *Tarses* sont jaune-bruns, et les derniers sont composés de cinq articulations, outre les griffes.

J'ai reçu cette espèce de plusieurs lieux sur la côte d'Afrique.

Je ne l'ai vu dans aucun auteur.

## P L A T E XLIII.

FIG. I. Expands two inches and a half.

THE *Antennæ* are thread-like, and the length of the thorax.—The insect, when living, I judge was green, but is now of a yellowish brown, the *Eyes*, *Head*, and *Thorax*, being of that colour.—One third of the *Wing Cases*, next the tips, is transparent, the remainder being green.—In the centre is a yellow spot resembling an eye, encircled with black, whose centre is dark green, with a black margin at top.—The *Wings* are transparent.—The *Fore Legs* are yellow brown.—The *Shins* are thick and strong, with two rows of spines running down them, one on the inner side, the

FIG. I. Deploye deux pouces et demi.

LES *Antennes* sont en filet, et de la longueur du corcelet.—L'insecte, quand vivant, je juge avoir été vert, mais à présent est jaunâtre-brun, les *Yeux*, la *Tête*, et le *Corcelet*, étant de cette couleur.—Un tiers des *Etuis* proche des bouts est transparent, le restant étant vert. Dans le centre se trouve une tache jaune, qui ressemble un œil environné de noir, dont le centre est verd obscur, avec une marge noire au haut.—Les *Ailes* sont transparentes.—Les *Pieds* de devant sont jaune-bruns.—Les *Jambes* sont grosses et fortes, avec deux rangées d'épines, qui courent en bas, une

# I N D E X

Plate.	Fig.	Genus.	Clasf.	Genus.	Plate.	Fig.	Genus.	Clasf.
XLII.	3.	Fervens	Hym.	Form.	XLVI.	8.	Pukbellus	Hemip.
	4.	Severus		Sph.	XLVI.	9.	Argus	
XLIII.	1.	Ocellaria	Hemip.	Mant.	XLVII.	1.	Flavellicornis	Coleop.
	2.	Rostratus		Cim.		2.	Fasciatus. Fab. Syst. P. 212. 12.	Elater.
	3.	Flaveolus		Cim.		3.	Pictus	Elater.
	4.	Scapha		Cim.		4.	Serraticornis	Elater.
	5.	Longirostris		Cim.		5.	Angulatus	Elater.
XLIV.	1.	Torquata	Coleop.	Scar.		6.	Porcatus. Fab. Syst. P. 211. 8.	Elater.
	2.	Unicolor		Scar.	XLVIII.	1.	Lanosa	Hemip.
	3.	Hespera		Scar.		2.	Cinctus	Coleop.
	4.	Cineta		Scar.		3.	Claviger. Fab. Syst. P. 5. 7.	Scar.
XLV.	1.	Barbicornis. Fab. Syst. P. 730. 3.	Hemip.	Cim.		4.	Mexillofus	Hift.
	2.	Falx		Cim.		5.	Festinus. Fab. Syst. P. 21. 111.	Scar.
	3.	Latipes		Cim.		6.	Faurus. Fab. Syst. P. 23. 89.	Scar.
	4.	Purcis		Cim.		7.	Myrtacina. Fab. Syst. P. 70. 1.	Hift.
	5.	Sanctus. Fab. Syst. P. 709. 60.		Cim.		8.	Spectabilis	Ceram.
	6.	Validus		Cim.	XLIX.	1.	Giganteus. Fab. Syst. P. 161. 8.	Ceram.
	7.	Umbrosus		Cim.		2.	Scalaris	Curcul.
	8.	Conspicillatis		Cim.		3.	Plumicornis	Lept.
XLVI.	1.	Catena		Cim.		4.	16 Punctatus. Fab. Syst. P. 146. 98.	Curcul.
	2.	Virens		Cim.		5.	Morbillofus	Curcul.
	3.	Humilis		Cim.	I.	1.	Cerulata	Neurop.
	4.	Spectabilis		Cim.		2.	Splendida	Coleop.
	5.	Anchorago. Vid. Fab. Syst. P. 699. 11.		Cim.		3.	Picta	Hemip.
	6.	Regius. Perhaps a variety of Fig. 1.		Cim.		4.	Armata	Fulgora.
	7.	Afer		Cim.				