

Two new species of South American leafhoppers (Homoptera, Cicadellidae)

RAUNO LINNAVUORI and DWIGHT M. DELONG

LINNAVUORI, R. & DELONG, D. M. 1978. Two new species of South American leafhoppers (Homoptera, Cicadellidae). — Ann. Ent. Fenn. 44, 54—55.

Two South American leafhoppers are described: *Scaphytopius (Fundarus) vinculatus* sp. n., belonging to a new subgenus, *Fundarus*, subgen. n., in the Cicadellinae, and *Perugrampta napoensis* sp. n., belonging to the Nirvaninae.

R. Linnavuori, SF-21220 Somersoja, Finland.

D. M. DeLong, Department of Entomology, Ohio State University, Columbus, Ohio 43210.

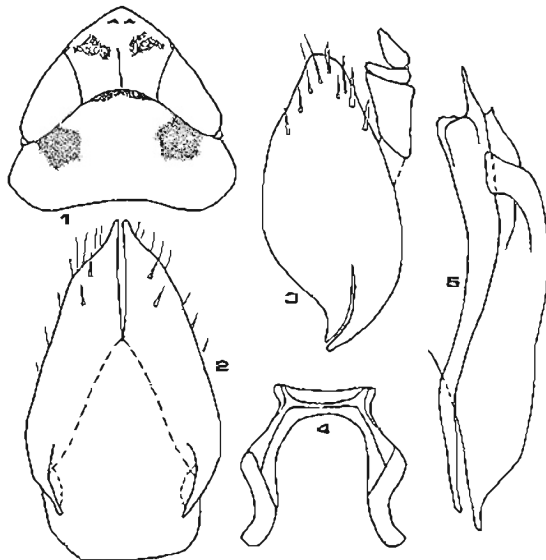
Index words: *Scaphytopius vinculatus* sp. n., Cicadellinae; *Perugrampta napoensis* sp. n., Nirvaninae, South America.

Two new South American species of Cicadellidae are described. One, a species of Cicadellinae from Bolivia, *Scaphytopius vinculatus* sp. n., belongs to a new subgenus, *Fundarus* subgen. n. The other, a species of Nirvaninae, *Perugrampta napoensis* sp. n., is related to *P. cuscoensis* Kramer.

Scaphytopius (Fundarus) vinculatus sp. n.
(Figs. 1—5)

Length of male 4 mm, female unknown. Crown 1.33 times as long in middle as laterally, 1.14 times as long as broad, 0.84 times as long as pronotum. Colour: face black with a central, transverse yellow area, just beneath margin of crown. Crown yellow with a pair of small proximal brown spots just above apex. A pair of large, brown, somewhat quadrate spots between anterior margins of eyes. Pronotum yellowish brown, posterior margin dark greyish brown, median portion of anterior margin narrowly black. A large dark brown spot behind middle of each eye. Scutellum yellow with four median elongate brown spots on anterior margin. Forewings brownish, subhyaline, veins darker brown.

Male genitalia: Pygophore narrow, elongate; side lobes elongate, with several macrosetae. Genital plates fused with valve, long, ending in slender tips, with two delicate macrosetae, lateral margins with long hairs. Apophysis of style very long and slender, weakly sclerified, basal part of style very small. Connective broadly U-shaped. Shaft of aedeagus connected with falcate paraphyses by sclerified basal prolongation, apical part of shaft expanded and provided with a pair of lateral lamellae; gonopore subapical on ventral surface.



Figs. 1—5. *Scaphytopius vinculatus* sp. n. 1. head and pronotum dorsally. 2. valve and genital plate. 3. pygofer and anal tube laterally. 4. connective ventrally. 5. style and genital plate dorsally.

Holotype male, Bolivia Cochabamba, Compare 1100 M. Alto Palmar. October 1960, F. H. Walz Coll. Male paratype same data as holotype, in the DeLong collection, Ohio State University.

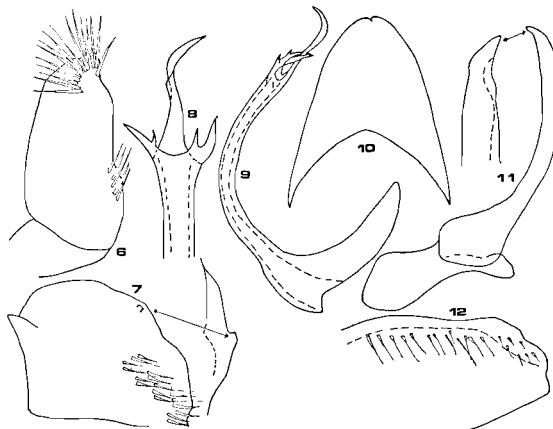
Scaphytopius — Subgenus *Fundarus* subgen. n.

With valve long, bluntly pointed, plates long, fused with style, concavely rounded subapically, apices narrow-pointed. Genae protruding laterally, a portion visible from above at apex of eye.

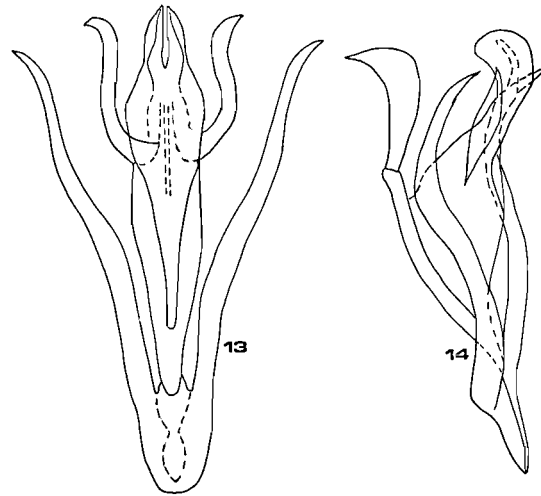
Type of subgenus *Scaphytopius* (*Fundarus*) *vinculatus* sp. n.

Perugrampta napoensis sp. n. (Figs. 6—14.)

Length of male 7.5 mm, female unknown. Crown parabolic, rounded apically, 5 times as long in middle as laterally, 1.33 times as long as broad, 1.82 times as long as pronotum. Pronotum 2.35 times as broad as long in middle. Colour, crown dark brown with lateral margin on anterior half pale brown, with white stipple spots. Pronotum and scutellum dark brown. Forewings brown subhyaline, veins dark brown. A brown spot at apex of clavus and on base of



Figs. 6—12. *Perugrampta napoensis* sp. n., 6. valve and plate ventrally, 7. pygofer laterally, 8. apex of aedeagus ventrally, 9. aedeagus ventrally, 10. pygofer without macrosetae dorsally, 11. style laterally, 12. plate dorsally.



Figs. 13—14. *Perugrampta napoensis* sp. n. 13. aedeagus ventrally. 14. aedeagus laterally.

outer apical cell. Apical third of wing with irregular yellowish brown mottling.

Male genitalia: Pygophore large, entirely sclerified dorsally; side lobes with numerous macrosetae, ventral margin with a blunt tubercle. Anal tube small, membranous. Valve short. Genital plates very broad, apical margin insinuated, lateral margin upcurved and provided with long hairs; two groups of macrosetae, one at apicolateral angle, one subbasally near lateral margin. Apophysis of style very long, falcate. Connective very small, Y-shaped. Shaft of aedeagus long, tubular, recurved dorsad, with three apical appendages, the median one long and falcate, the lateral processes bifid; gonopore at base of appendages.

Holotype male, Napo River, Peru, VII 1919, in the DeLong collection, Ohio State University.

P. cuscoensis Kramer has the crown narrower and ornamented with 6 longitudinal stripes; the side lobes of the pygophore with fewer macrosetae, and without ventral tubercles; the apophysis of the style shorter and tapering gradually apicad; the apical processes of the aedeagus different.

References

- KRAMER, J. P. 1965. Studies of Neotropical leafhoppers I (Homoptera: Cicadellidae). — Proc. Ent. Soc. Washington 67, 65—74.

Received 26. VIII 1977