

Species of Gyponinae (Homoptera: Cicadellidae)
Described by Herbert Osborn

DWIGHT M. DELONG

Department of Entomology, Ohio State University

ABSTRACT

An attempt has been made to place generically the 37 species of *Gyponinae* described by Herbert Osborn (1905, 1926, 1938). *Rhogosana rugulosa* is considered a good genus and species. *Clinonana declivata* described in *Ledrinae* has been placed in *Clinonella* (1971). *Gypona aurifera*, *G. cruzana*, *G. fulvotincta*, *G. hyalina*, *G. peruviana*, *G. pulchella*, *G. viridula*, *G. vitrea* and *G. sierra*, as a synonym of *G. paupercula* Spang., are considered as species of *Gypona*. *Gypona lineosa* and *G. ecuadora* are placed in *Hecalapona*. *Gypona ancona* is a species of *Prairiana*. *Gypona geminata* to a synonym of *Gyponana octolineata* (Say 1964). *Gypona bahia* is placed in a new genus *Bahapona* n. gen. *Gypona cubana*, *C. albimaculata*, *Prairiana rosacea*, *P. griseola*, and *P. variegata* are placed in *Curtara* (1976). *Gypona boliviana* is a species of *Chloronana* (1964). *Prairiana nigrifrons* and *P. labella* are placed in the genus *Acuera* (1974). *Prairiana basalis* and *P. robusta* belong to the genus *Foliciana* (1972b). *Ponana affimula*, *P. bicolorata*, *P. grossa*, *P. ornata*, *P. notatula*, *P. sarana*, and *P. sulfurea*, placed in *Climonaria* (1969) by DeLong & Freytag, belong to the genus *Scaris* (1825). *Ponana bruneola*, *P. fusconatata*, and *P. piceata* have been placed in *Polana* (1927c). *Ponana punctella* has not been available for study.

Some 37 species of *Gyponinae* were described by Herbert Osborn (1905, 1926, 1938) which he placed in six genera, *Clinonana*, *Rhogosana*, *Gypona*, *Gyponana*, *Ponana*, and *Prairiana* (excluding those species which were not *Gyponinae*). The genus *Clinonana* was found to belong to *Ledrinae* but the species *Clinonana declivata*, a good gyponine, was transferred to a new genus, *Clinonella* (1971), and *Rhogosana rugulosa* remains a good genus and species in present literature.

In view of the fact that several new genera have been described, DeLong (1942) and DeLong & Freytag (1972a, 1975), the species described by Osborn in the other four genera have been variously treated. One species described as *Gypona boliviana* has been placed in *Chloronana* (1964).

Fifteen species of *Gypona* were described by Osborn, seven of which, *Gypona aurifera*, *G. cruzana*, *G. fulvotincta*, *G. hyalina*, *G. peruviana*, *G. pulchella*, and *G. sierra* as a synonym of *G. paupercula* Spangberg are designated as species of *Gypona*. Osborn's *G. geminata* has been made a synonym of *Gyponana octolineata* (Say) (1971). Two species not previously treated, *G. viridula* and *G. vitrea* are now considered as species of *Gypona* but *G. albomaculata* and *G. cubana* are placed in *Curtara*. *G. ecuadora* and *G. lineosa* are placed in *Hecalapona*, *G. ancona* is placed in the genus *Prairiana* and a new genus, *Bahapona*, is described for the inclusion of *G. bahia*.

Osborn described six species of *Prairana* one of which, *P. nigrifrons*, was placed in *Acuera* (1974), two, *P. basalis* and *P. robusta* were placed in *Folicana* (1972b) and two, *P. rosacea* and *P. variegata* were placed in *Curtara* (1976). The species described as *P. griseola* is placed in *Curtara* at this time. It was redescribed as *Curtara arca* DeLong & Freytag (1976).

Twelve species were described by Osborn as *Ponana* seven of which, *P. affinula*, *P. bicolorata*, *P. grossa*, *P. notatula*, *P. ornata*, *P. sarana*, and *P. sulfurea*, placed in *Clinonaria* (1969), belong in *Scaris*. Three species, *P. bruneola*, *P. fusconotata* and *P. piceata* were placed in *Polana* (1972a). One species, *P. labella* is now placed in *Acuera* and one, *P. punctella* has not been available for study.

It is unfortunate that so many species are based on a single female type specimen because these species cannot be placed specifically.

The following species have not previously been treated or are placed in one of the newly described genera.

Gypona viridula Osborn

Gypona viridula Osborn p. 26, 1938.

Length of female 8.5 mm. This is a large green female specimen of *Gypona* but cannot be specifically placed. Described from a single female specimen.

Holotype female from Quatra Ojos, Bolivia in the Carnegie Museum.

Gypona vitrea Osborn

Gypona vitrea Osborn p. 26, 1938.

Length of female 7 mm. This species was described from a single green female specimen and cannot be placed specifically without the study of a male specimen.

Holotype female from Provincia de Sara, Bolivia, in the Carnegie Museum.

Hecalapona ecuadora (Osborn) (new combination)

Gypona ecuadora Osborn p. 30, 1938.

Length of female 8 mm. The female type specimen of *G. ecuadora* is a typical *Hecalapona* but cannot be placed specifically. The genus *Hecalapona* was described recently and is closely related to *Gypona*.

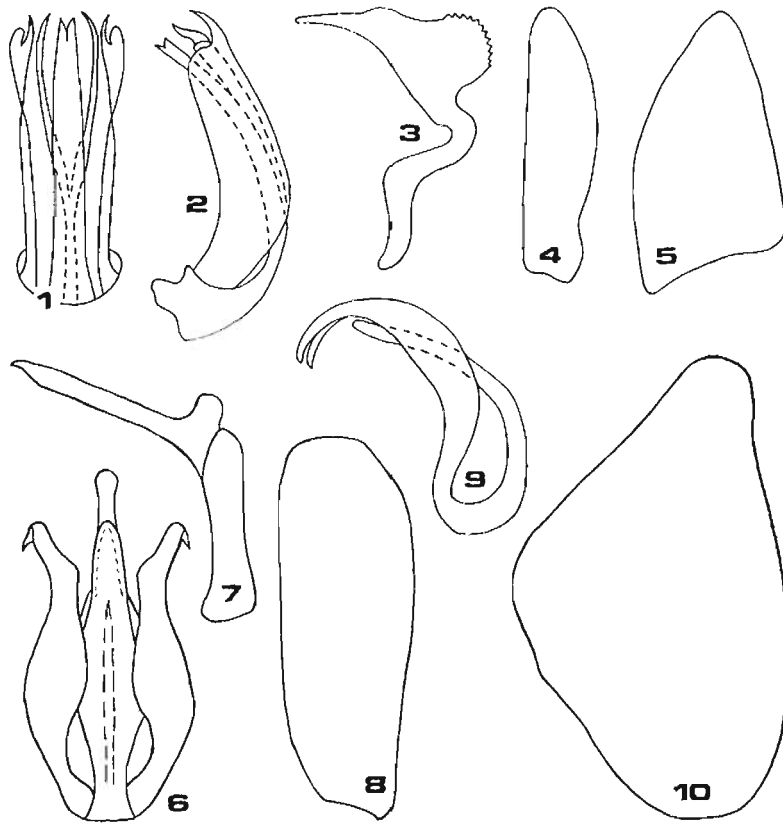
Holotype female from Balsapamba, Ecuador in the Osborn Collection.

Hecalapona lineosa (Osborn)

(Figs. 1-5)

Gypona lineosa Osborn Anns. Carn. Mus. p. 525, 1938.

Length of male 9 mm, female unknown. Length of crown equaling width at base between eyes and almost as long as pronotum; margin thin and foliaceous, veins dark green.



FIGS. 1-5. *Hecalapona lineosa* (Osborn). 1, aedeagus, ventrally; 2, aedeagus, laterally; 3, style, laterally; 4, plate, ventrally; 5, pygofer, laterally. FIGS. 6-10. *Bahapona bahia* (Osborn). 6, aedeagus, ventrally; 7, style, laterally; 8, plate, ventrally; 9, aedeagus, laterally; 10, pygofer, laterally.

Male genitalia with plates more than three times as long as median width, apices rounded. Style with blade strongly, roundly inflated on ventral margin near base, center of curved margin serrate, apical half tapered, apex narrow, pointed. Aedeagal shaft divided, dorsal portion divided at apex, tips pointed, approximate; ventral portion with apices of processes slightly constricted, then bluntly pointed. Paraphyses broad, leaf-like bearing a spine on ventral margin of each apex. Pygofer narrowed and blunt at apex.

Holotype male from British Guiana in the Osborn Collection, Ohio State University.

Prairiana ancona (Osborn) (new combination)

Gypona ancona Osborn p. 30, 1938.

Length of female 9 mm. This is a typical specimen of *Prairiana* and being a female specimen cannot be placed specifically.

Holotype female from Ancon, Canal Zone, Panama in the Osborn Collection.

Acuera labella (Osborn) (new combination)

Ponana labella Osborn p. 45, 1938.

Length of female 12 mm. This female specimen is undoubtedly a species of *Acuera* and can be placed specifically if the male can be determined.

Holotype female from Coroico, Bolivia in the Osborn Collection.

Curtara griseola (Osborn) (new combination)

Prairiana griseola Osborn p. 38, 1938.

Curtara arca DeLong & Freytag p. 14, 1976. (new Synonymy)

Length of male 7 mm. This specimen is a typical member of the genus *Curtara* and by mis-identification was recently redescribed as *Curtara arca* by DeLong & Freytag.

Holotype male from Provincia de Sara, Bolivia in the Carnegie Museum.

Curtara cubana (Osborn) (new combination)

Gypona cubana Osborn Anns. Entomol. Soc. Amer. 19:341, 1926.

Length of male 8.5 mm, female unknown. This species is represented by a female of *Curtara*. The male may have been described under another name but this cannot be determined.

Holotype female cannot be located, a paratype female from Holguín, Cuba is in the Osborn Collection.

Genus *Bahapona* n. gen.

Head produced and rounded, margin distinct but thick, front slightly inflated. Ocelli nearer anterior than posterior margin of crown and equidistant between median line and proximal eye. Aedeagus with paraphyses.

Type species: *Gypona bahia* Osborn.

This genus is intermediate between *Gypona*, *Ponana* and *Polana*.

Bahapona bahia (Osborn)

(Figs. 6-10)

Gypona bahia Osborn Anns. Carn. Mus. p. 31, 1938.

Length of male 6.5 mm, female unknown. Crown produced and rounded, twice as broad at base between eyes as median length. Ocelli nearer anterior than posterior margin and equidistant between median

line and proximal eye. Margin distinct but thick, front slightly inflated. Color brown, margin of crown black. Forewings brownish subhyaline, veins darker brown.

Male genitalia with plates two and one half times as long as median width, apices broadly rounded. Style blade with a bulge at base on ventral margin then extending straight and slender to apex which is bluntly pointed. Aedeagus with shaft broadened at middle, apical portion slender, tip blunt. Paraphyses broadened at middle, apices slender, curved dorsally, bluntly pointed. Pygofer narrowed, blunt at apex.

Holotype male from Bahia, Brazil in the Osborn Collection, Ohio State University.

LITERATURE CITED

- DeLong, Dwight M. 1942. A Monographic Study of the North American Species of the Subfamily *Gyponinae* (Homoptera: Cicadellidae) Exclusive of Xerophloea. Ohio State Univ. Press No. 5 Biological Series 187 pp.
- DeLong, Dwight M., and Paul H. Freytag. 1964. Studies of the *Gyponinae*. A New Genus, *Chloronana*, (Homoptera: Cicadellidae) *Ann. Entomol. Soc. Amer.* 57:503-511.
- . 1964. Four Genera of the World *Gyponinae* (Homoptera: Cicadellidae). A Synopsis of the Genera *Gypona*, *Gyponana*, *Rugosana* and *Reticana*. Ohio Biol. Survey Bull. New Series II (3), iii + 227 pp., 43 pl. 372 fig.
- . 1969. Studies of the World *Gyponinae* (Homoptera: Cicadellidae) A Synopsis of the Genus *Clinonaria*. Ohio Jour. Sci. 69:129-182.
- . 1971. Studies of World *Gyponinae* (Homoptera: Cicadellidae). *Rhogosana* and Four New Genera, *Clinonella*, *Tuberana*, *Flexana*, and *Declivara*. Jour. Kans. Entomol. Soc. 44:313-324.
- . 1972a. Studies of the *Gyponinae*: A Key to the Known Genera and descriptions of Five New Genera. Jour. Kans. Entomol. Soc. 45:218-235.
- . 1972b. Studies of the *Gyponinae*: The Genus *Folicana* and Nine New Species (Homoptera: Cicadellidae). Jour. Kans. Entomol. Soc. 45:282-295.
- . 1972c. Studies of the *Gyponinae* (Homoptera: Cicadellidae): The Genus *Polana*. Arquivos de Zoologia, São Paulo, Brazil 22(5):239-324.
- . 1974. Studies of the *Gyponinae*: The Genus *Acuera* (Homoptera: Cicadellidae) Ohio Jour. Sci. 74:185-200.
- . 1975. Studies of *Gyponinae* (Homoptera: Cicadellidae): The Genus *Hecalpona* and Thirty-Eight New Species. Jour. Kans. Entomol. Soc. 48:547-579.
- . 1976. Studies of the World *Gyponinae* (Homoptera: Cicadellidae) A Synopsis of the Genus *Curtara*. Brenesia No. 7 Dept. de Hist. Mus. Nac. de Costa Rica.
- LePeletier, de Saint Forgeau, Amedee Louis Michel and Audinet Serville, J. G. 1825. Tettigometre Tettigonia. Oliver's Encyclopedie methodique Histoire naturelle Entomologie ou histoire naturelle des Crustaces, des Arachnides et des Insectes 10:600-613.
- Osborn, Herbert. 1905. Jassidae of New York State Bull. N.Y. State Mus. 97:498-545.
- . 1926. Faunistic and Ecologic Notes on Cuban Homoptera. *Ann. Entomol. Soc. Amer.* 19:335-366, pl. 30-31.
- . 1938. Art. II. Neotropical Homoptera of the Carnegie Museum. Part 7. Report on the Species of the Subfamily *Gyponinae*. *Ann. Carnegie Mus.* 27:11-62, pl. 1-5.